

# CBD NEWS

cbdnews.com.au

Forever Free

Puzzles & Trivia P21



Make the whole lane shimmer  
Photo by Hanna Komissarova

As part of the City of Melbourne's "Dusk till Dawn" campaign, Meyers Place has been transformed into "Shimmer Lane" – a life-sized, walk through disco running until November 30. Full story on page 7.

## City mourns after Bourke St tragedy as traders hope to see visitors return

*CBD traders say striking a balance that allows for enhanced security while maintaining a lively atmosphere will be crucial to the city's resilience after a Bourke St tragedy claimed the life of a man.*

WORDS BY *Brendan Rees*  
SAFETY & SECURITY

Police are ramping up patrols across the city grid after charging 26-year-old Melton West man Zain Khan with murder and attempted murder after he allegedly ploughed his car into cars and three pedestrians, killing a 76-year-old motorist on the evening of September 8.

The devastating incident has sent shockwaves throughout the community, with one attaching a poem to a nearby tree where the incident occurred, with the title of "A Poem for the People".

Lord Mayor Sally Capp said that while the city was still feeling the aftermath of this tragedy, data showed Melbourne was a safe city.

"This was an isolated and tragic incident. It's understandable it could have triggered emotions and fears relating to previous, unrelated incidents in Bourke St," she said, referring to the tragedies in 2017 and 2018, with six people killed by an erratic driver in the first, and the latter resulting in the fatal stabbing of Pellegrini's Espresso Bar owner Sisto Malaspina.

"We understand the concerns from traders that this will affect customer confidence at a time when they are still trying to find predictability and a steady rhythm. We are pleased to see that there has not been a significant drop in people visiting the city,



▲ Victoria Police Commander Mark Galliot addresses the media, announcing police will step up patrols in September. Photo: Hanna Komissarova.

as shown through our pedestrian data sensors," Cr Capp said.

"Our team has been proactively visiting business owners and workers in the city, offering outreach services and support."

City Precinct Traders' Association for small businesses president Chloe Beevers said she supported a stronger police presence, but not to the point where it made people feel on edge.

"Clearly there's always a balancing act, if measures are too heavy handed it can be counterproductive," she said. "We do need to make sure that there is a good police presence and that there are very clear safety measures being made so that people can see that yes, this is a safe place."

Continued on page 10.

## Retail owner shattered after \$100K of designer wear stolen

*The owner of a high-end clothing shop in the CBD has been left devastated after intruders smashed their way in, making off with an estimated \$100,000 worth of stock.*

WORDS BY *Brendan Rees*  
CRIME

Melbourne Crime Investigation Unit detectives have arrested one woman but are still hunting two people after they broke into the store at the corner of Swanston and Little Bourke streets on the morning of September 12, stealing designer clothing and jewellery.

Owner Polly Zhang said the thefts, which were captured on CCTV footage, showed three people breaking in

via a ground floor security door at around 3.50am before using a crowbar to break into her shop called Mars King, which is located on level two of a building at 226-228 Swanston St.

She said they allegedly grabbed large shopping bags behind the counter and filled them with whatever they could from the shop floor, including jewellery kept in locked cases.

The footage showed two people allegedly returning to the store at around 5am and again at 6.20am, stealing more items.

"I am very shocked and devastated. I haven't slept," Ms Zhang said, adding she had relocated her store from Little Bourke St after thieves stole a combined \$40,000 worth of clothing in February and June.

She said the most recent break-in was a blow to her business, which she had poured her heart and soul into since 2014.

Continued on page 7.

METRO TUNNEL, PAGE 02

### A Traffic delays around State Library Station



HEALTH, PAGE 05

### B Candlelight vigil for overdose awareness day



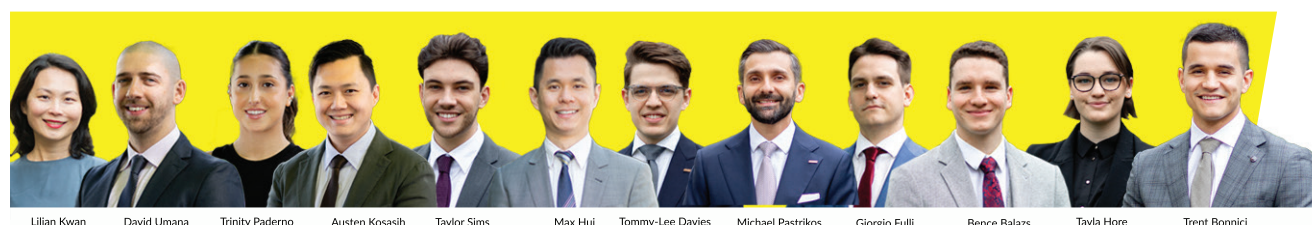
MAJOR WORKS, PAGE 06

### C Strengthening the CBD's power network



ARTS & CULTURE, PAGE 14

### D Lola Greeno takes out Macfarlane Prize



Lilian Kwan David Umana Trinity Paderno Austen Kosasih Taylor Sims Max Hui Tommy-Lee Davies Michael Pastrikos Giorgio Fulli Bence Balazs Tayla Hore Trent Bonnici

Buy, Sell, Rent

Speak to our team today

8102 0200 | raywhitesouthbank.com.au

RayWhite

**CONTACT**  
Suite 208, 198 Harbour Esplanade  
Docklands 3008  
cbdnews.com.au  
Tel: 8689 7980

**EDITOR**  
Sean Car

**PUBLISHER**  
Hyperlocal News Pty Ltd  
ABN: 57 623 558 725

**ADVERTISING**  
Hyper-local print works for advertisers in our digital world because local people are interested in local news. To sell to the CBD community, contact Jack Hayes on 0401 031 236 or jack@hyperlocalnews.com.au

Reader contributions are welcome. Send letters, articles and images to: brendan@hyperlocalnews.com.au

The deadline for the November edition is October 20.

**SOCIAL MEDIA**  
Follow us on Twitter @CBD\_News\_3000

Like us on Facebook cbdnewsmelbourne

Follow us on Instagram @cbdnews

Opinions expressed by contributors are not necessarily shared by the publisher.

hyperlocalnews.com.au  
admin@hyperlocalnews.com.au



METRO TUNNEL

# State Library Station entrance will be a key landmark in the heart of the CBD

*The striking main entrance for the new State Library Station is set to become an important new landmark in Melbourne's CBD.*

Metro Tunnel crews have begun craning in the first of six massive entrance beams that will complete the entrance's main structure, with the final beams expected to be in place by October.

The 70-tonne beams will sit atop a dozen towering columns to form the entrance near the corner of La Trobe and Swanston streets, reflecting the grand scale of the State Library of Victoria diagonally opposite.

It will feature a world-class artwork by contemporary artist Danie Mellor as part of the Metro Tunnel Legacy Artwork Program.

The station entrance will become an important marker for its street corner, according to Victorian Government Architect Jill Garner.

"Diagonally opposite the grand portico of the State Library, the new station entrance is also designed as a city-scaled colonnade," Ms Garner said.

"It will be a recognisable place that tells you you've arrived at the academic part of Melbourne's Swanston St spine."

A section of La Trobe St was closed to vehicles in early September for up to 12 months, as work ramps up on the station.

**The eastbound lane between Elizabeth and Swanston streets is closed to vehicles and cyclists with detours in place.**



Pedestrian access is being maintained and trams are continuing to run along La Trobe St.

Below ground, work is continuing on the pedestrian underpass that will link the new station to Melbourne Central Station and City Loop services. Crews have finished fitting platform screen doors and are currently installing escalators.

State Library Station is one of five underground stations being built as part of the Metro Tunnel Project, the biggest rail project in Victoria since the City Loop.

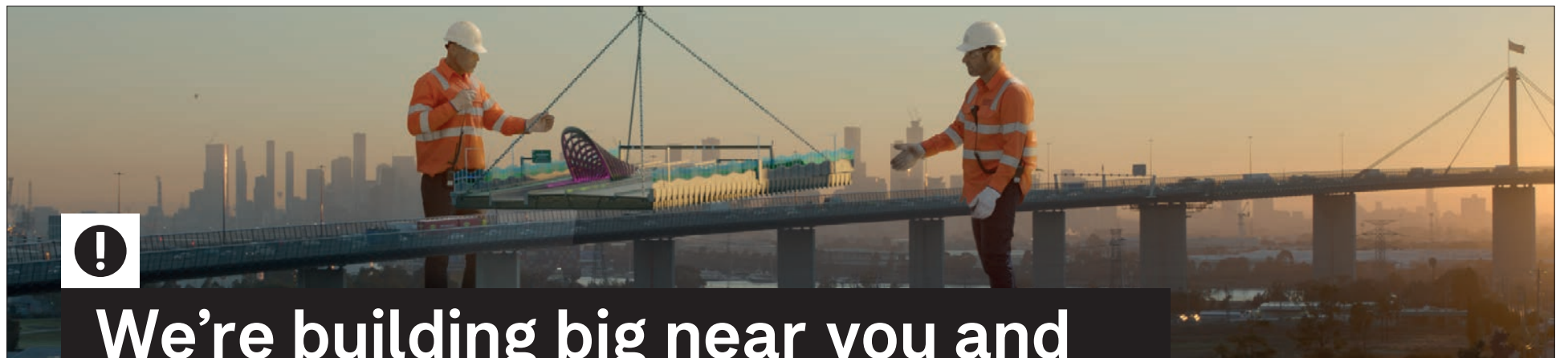
The project will bring a world-class public transport experience to Melbourne, said Ms Garner.

"It will make catching the train a memorable experience and it will be a preferred way to get to certain parts of the city," she said.

"Metro Tunnel is not a generic design. It will be recognisably 'Melbourne', with each station drawing on the particular qualities and characters of their place."

The Metro Tunnel will open to passengers in 2025, a year ahead of schedule. ●

**For more information:**  
[bigbuild.vic.gov.au](http://bigbuild.vic.gov.au)



## We're building big near you and there will be transport disruptions

As part of Victoria's Big Build, we're building an alternative to the West Gate Bridge. We've finished tunnelling for the West Gate Tunnel, which will create better connections across our city and take thousands of trucks off local roads. We're also building the Metro Tunnel, with works continuing on five new underground stations.

**Road disruptions: Roads and lanes closed**

<b>La Trobe Street</b>	Until mid-2024	Eastbound lane, between Swanston and Elizabeth streets
<b>Footscray Road</b>	Early Oct to early Dec	Reduced lanes in both directions between Shepherd Bridge and Waterfront Way
<b>Wurundjeri Way and Dudley Street intersection</b>	Early Oct to early Dec	Wurundjeri Way between Dudley and Bourke streets Dudley Street between Footscray Road and Spencer Street



Check before you travel at [bigbuild.vic.gov.au](http://bigbuild.vic.gov.au)



Authorised by the Victorian Government, 1 Treasury Place, Melbourne

# A pairing like no other

“

*Finding Pearl Chablis and Oyster bar isn't a case of blink, and you'll miss it (because you'll need to do more searching than that).*

”

WORDS BY *Jack Hayes*  
PHOTOGRAPHY BY *Jana Longhorst*  
BUSINESS



It's a case of wading through the hustle and bustle of the CBD's centre, taking an escalator up to the second floor of a busy shopping centre, and stepping inside a venue that can only be described as an ode to one of the culinary world's greatest matches: oysters and Chablis.

In the world of wine, Chablis sits above all others, suspended in a constant state of viticultural rare air.

Hailing from Burgundy's northernmost appellation in France's central east, Chablis is considered the holy grail of white wine, produced entirely from a grape with a chequered history, chardonnay.

After opening in early 2022, Pearl's devotion to one of wine's "noble" grapes has just undergone a complete revamp with a "new team, new menu, new experience and new philosophy."

Lead by executive chef Claude Gorjux, head chefs Hunter Tacuyan and Max Doucet, alongside guest sommelier Luke Campbell, the new Pearl breaks down the barriers of traditional guest experiences, creating a venue where every

table is a chef's table, and every dish is served by the chefs themselves.

"The space at Pearl is intimate and opulent and now the menu and experience match perfectly," Gorjux said.

"As a chef, I'm excited to have a close connection with every guest. Diners will get to see first-hand what's happening in the kitchen, right before their eyes – it's going to be a mix of excitement and a bit of nervousness, but it's all part of the fun."

The new menu is an intersection of modern Australian ingredients and French technique, with Chablis and oysters playing their naturally starring roles.

Pearl's signature dish, aptly named, The Pearl, consists of smoked Paspaley pearl oyster meat, Rock oyster, old vine Chablis, cauliflower and beurre blanc.

Along with new dishes to excite the menu is the 72-hour slow-cooked Yumbah Green Lip Abalone, served with a melange of forbidden black rice, cooked barley, speck lardons and

finished tableside with a warm pork and chicken consommé infused with lemongrass and shitake.

There is also Alaskan king crab combined with jalapeno, finger lime and dashi, and topped with a golgappa that diners smash through to reveal an oyster cream, and to end, a sunchoke caramel, caviar, and chocolate tart.

"Pearl has undergone a complete transformation. With our executive chef leading the way, we have assembled an exceptional new team," owner Jeremy Schinck said.

"Pearl has transcended the boundaries of being just a restaurant; it has evolved into an immersive experience orchestrated harmoniously by our chef and sommelier. Our vision encompasses a world-class fusion of extraordinary cuisine, exquisite French wines, and impeccable service."

"To achieve this level of service, we have changed our operating model, transitioning to a four-day week to ensure that all our chefs are present during every service, personally

delivering the culinary masterpieces they have crafted."

Pearl has also been honoured as the only wine bar outside of Paris endorsed by the Burgundy Wine Board for its exceptional offerings in Chablis, and awarded a coveted Wine Spectator, Best of Award of Excellence for its wine list. ●

**For more information:**  
[pearloyster.co](http://pearloyster.co)



## Hidden Secrets

A DEDICATED SECTION FOR UNEARTHING THE HIDDEN GEMS IN MELBOURNE'S CBD. TO BE FEATURED, EMAIL:

[JACK@HYPERLOCALNEWS.COM.AU](mailto:JACK@HYPERLOCALNEWS.COM.AU)



Not Your Normal Lawyers  
In Collins Street

As a visit to our quirky, art filled office will quickly show you, our clients find we are anything but boring.

We do not focus on giving you just legal advice, but on providing you with outcomes and solutions that will help foster a long term working relationship.

Contact Us Today



**nc** neville & co.  
commercial lawyers

[www.neville.com.au](http://www.neville.com.au)

GRAND LAUNCH AND OPENING OF NEW DISPLAY GALLERY – COMING SOON



Artist's Impression

# BLVD <sup>M</sup>

Register your interest now to receive exclusive VIP opportunities over the Grand Launch weekend.

We're excited to bring you BLVD's new display gallery, opening next month at Melbourne Square. Uncover the sensory living experience and explore the tactility of the fixtures and finishes on offer. Register your interest now for the BLVD Grand Launch weekend to receive a priority viewing and exclusive opportunities.

The next residential release at Melbourne Square is designed to engage and enhance the senses. Set on an elegant, tree-lined boulevard and surrounded by 3,745m<sup>2</sup> of lush green parkland, this peerless inner-city address in an established and thriving precinct delivers resort-style amenities and elevated wellbeing.

Visit the website today to register now.

[blvdmsq.com](http://blvdmsq.com)

Display Gallery open daily 10am–5pm.  
Corner of Power Street & Kavanagh Street  
Southbank, Melbourne.

1 Bedroom from \$529k  
2 Bedrooms from \$733k  
3 Bedrooms from \$1.259m

**M** MELBOURNE  
SQUARE®

COX

cair

T.C.L

**OSK**  
PROPERTY



# Want a healthier, safer CBD? Open an overdose prevention centre

*On August 31, International Overdose Awareness Day, more than 200 people gathered on the steps of Parliament to remember those who have lost their lives to drug overdose.*

WORDS BY *Dr Paul MacCartney*  
PHOTOGRAPHY BY *Marcela Lehocka*  
COHEALTH ADDICTION MEDICINE SPECIALIST

Among the mourners were mothers and fathers grieving the death of their precious children, some of whom had died alone in laneways just blocks away from where the crowd gathered.

If this were a vigil for any other health crisis, politicians from across the political spectrum would have flocked to attend. But the stigma of drug addiction kept many away.

As a community we stand at a pivotal juncture; to continue our current response which condemns drug users to inject in public toilets and alleys where they are at high risk of overdose and death. Or follow evidence and expert advice about what will save lives and improve the health and amenity of the entire community.

The journey to establish an overdose prevention service – also known as a supervised injecting room – in Melbourne’s CBD started 25 years ago. The first injecting room in the CBD was proposed in the mid-1990s attracting widespread support from the community, health sector and the then Kennett government, but failed to materialise.

Now, in 2023 we stand at the crossroads yet

again, with Premier Daniel Andrews having committed to establishing a CBD injecting service in 2020 after an independent expert recommendation, and the commissioning of a report from former Victoria Police commissioner Mr Ken Lay AO, APM.

In the three years since the Premier’s 2020 commitment, the City of Melbourne has become the ground zero of heroin overdose deaths, according to the Victorian Coroner, and drug-related ambulance callouts have overtaken neighbouring Yarra – a stark reminder that the problem has not gone away.

This trend can be reversed with the introduction of a CBD overdose prevention service with wraparound health services.

Countless evaluations of supervised injecting centres world-wide (there are more than 120) such as the one in Sydney set up in 2001 have demonstrated that these services provide many benefits including reducing overdose deaths, freeing up ambulances, connecting people to drug treatment and health services and improving amenity by keeping needles off the streets.

Right now, our CBD is operating as a 24/7 unsupervised injecting room extending over many city blocks.

City-based drug support service, The Living Room, responded to 148,000 requests for clean injecting equipment in the CBD.

Cohealth’s outreach team has seen a threefold increase in the number of people it is supporting on CBD streets during the past 12 months, and is responding to more overdoses than ever as people return to the city post-COVID.

The honeypot is already here. Drug use is happening in our city whether we like it or not, the question is whether we want people dying in the streets or look at alternative, proven,



health-based responses.

Overdose prevention services do more than just save lives. They help transform lives by connecting people to pathways out of addiction.

Research shows that people who use injecting services are five times more likely to commence drug treatment.

Supervised injecting rooms also help reduce drug-related crime. Since it opened in 2018, the North Richmond Medically Supervised Injecting Room has connected 850 users to pharmacotherapy such as methadone, enabling them to stop buying and using heroin, and cease funding the illicit drug trade in Melbourne.

Victoria Police report that overall crime in the area around the North Richmond facility has dropped to its lowest level in five years, including a drastic reduction in drug related offending.

In the 25 years since a CBD injecting room was first proposed, community sentiment has evolved, shaped by evidence and compassion.

This year, more than 80 CEOs of high-profile organisations spanning healthcare, youth, religion, law and research signed a joint letter

endorsing a supervised injecting room in Melbourne’s CBD.

When we see people dying of entirely preventable causes, and vulnerable people suffering in our streets, we have an obligation to act.

It’s been more than three years since the Victorian Government announced it would establish an overdose prevention service in Melbourne’s CBD.

During that time almost 40 people in the CBD alone have lost their lives to drug overdoses; deaths that are entirely preventable. How many more people need to die before we finally see action?

If we want to move drug use off the streets and help people get off drugs, if we want to make the CBD a safer and healthier place for everyone, if we want to improve the lives of highly disadvantaged people, then an overdose prevention service embedded with other health services is the solution. ●

**To show your support for a CBD overdose prevention service, sign the petition:**



**QUEEN VIC MARKET**

**EUROPA**

**NIGHT MARKET**

WEDNESDAYS | 5PM - 10PM | 27 SEP - 25 OCT

Celebrate European culture with authentic street food, drink, great shopping, live music and entertainment this Spring.

[EUROPANIGHTMARKET.COM.AU](http://EUROPANIGHTMARKET.COM.AU)

# Strengthening Melbourne’s underground power network



*Work has kicked off to strengthen several of Melbourne’s underground electricity pits and ensure they can withstand high traffic in some of the city’s busiest areas.*



MAJOR WORKS

From October and into early 2024, electricity distributor CitiPower will be conducting maintenance work to five separate pits following its extensive annual inspection program. The pits house the underground electricity network that powers the CBD.

CitiPower head of major projects and maintenance Marcus Olive said the work was critical to ensure the safety and reliability was maintained for the important underground assets.

“From the outside, these pits look small, but under each lid is a large area containing a series of cables and other infrastructure that is powering our city,” Mr Olive said.

“Our crews will take about 48 hours to complete each of the pit works and we will be working closely with businesses and residents to minimise the impact on them as much as possible.”

CitiPower will conduct the work on weekends, mainly during the day, and will reinstate footpaths and road reserves to their original



condition once completed. A small amount of work may be required at night in some areas.

“Due to the pit locations and to allow crews to safely complete the work, there may be some minor disruptions to traffic, parking, and public transport but we will not be affecting power supply,” Mr Olive said.

“We thank Melburnians for their patience as we conduct this critical work and want to assure them, we are taking steps to minimise any impacts to residents and businesses as much as possible.”

Lane closures will affect:

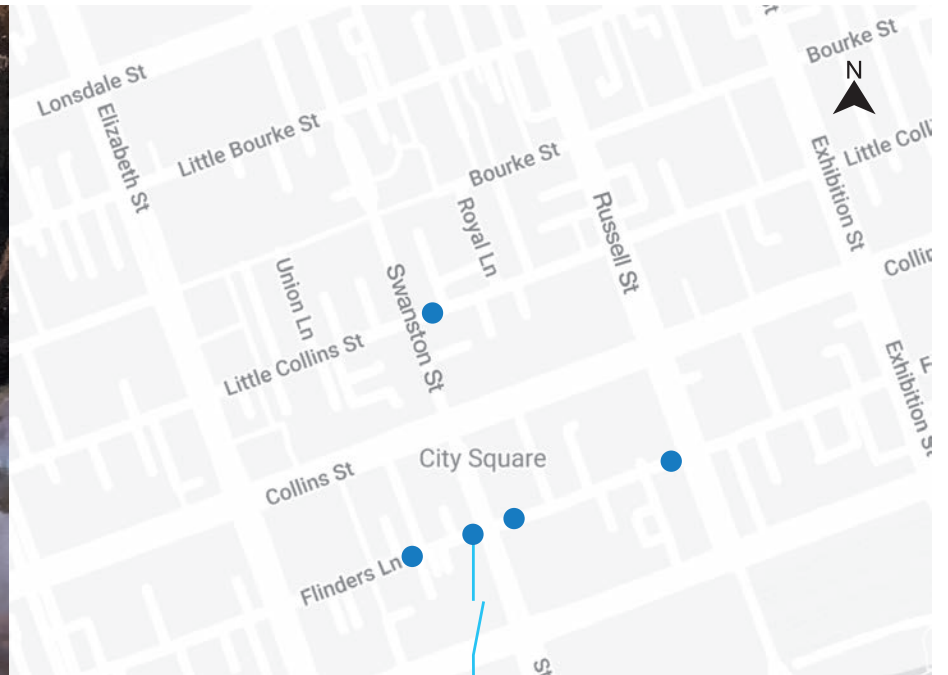
- Flinders Lane – between Russell and Elizabeth streets during October.
- Little Collins St – between Russell and Elizabeth streets during October and early November.

Traffic controllers and signs will be in place to ensure the safety of motorists, pedestrians, and cyclists.

CitiPower has a large underground network of cables and delivers electricity to a 157-square-kilometre region across Melbourne’s CBD and inner suburbs and provides power to more than 348,000 customers.

Electricity is distributed via a network comprising more than 4500 kilometres of wires, supported by more than 57,500 poles and associated infrastructure. CitiPower is the most highly utilised and efficient CBD and urban network in the country. ●

Scan below for more information:



## This little inconvenience will bring big things

**Underground Electricity Network Maintenance: Melbourne CBD**  
Ongoing until early 2024

We’re doing maintenance work on the underground electricity network in the CBD to keep providing you with safe and reliable power.

Works to upgrade five underground pits are underway and will continue into next year, taking place during weekends to minimise disruption to weekday traffic. The following week we’ll reinstate the road and footpaths.

Disruptions and lane closures will occur on Flinders Lane, between Russell Street and Elizabeth Street, and on Little Collins Street, between Russell Street and Elizabeth Street.

We’re committed to keeping people informed and will work closely with customers to minimise any impact. We’ll also notify residents and businesses affected by the work before we begin.



To find out more email [majorprojects@citipower.com.au](mailto:majorprojects@citipower.com.au), visit [citipower.com.au/major-projects](http://citipower.com.au/major-projects), scan the QR code or call us on 1300 301 101.

# Step into a world of dazzling lights and groovy beats

*It's time to unleash your inner disco diva as a new activation takes centre stage in the heart of the city.*

WORDS BY *Brendan Rees*  
PHOTOGRAPHY BY *Hanna Komissarova*  
EVENTS

Called Shimmer Lane, the dazzling walk-through experience at Meyers Place features vibrant murals consisting of thousands of small mirror squares, creating the effect of a life-sized, walk-through disco ball as it moves in waves and refracts light.

The walls feature a stunning *Jungle Funk* mural created by Mike Makatron and a light installation called *Light Bazaar* by Steve Manos, which will be both on display at night, creating an enchanting shimmer effect like no other.

Meyers Place bars, Lane's Edge Wine Bar and San Telmo, will be serving especially crafted cocktails with a "glittery touch". The "Shimmer

Elixir" from Lane's Edge is a concoction of vodka, cranberry, lime, and edible glitter to "give it that Shimmer Lane special touch".

Buskers will also perform every Friday night outside The Loop Bar from 6pm to 8pm including 2207, Debbie G, Little Notes and CYNTA.

Shimmer Lane runs until November 30 and is funded by the City of Melbourne as part of the city's from "Dusk 'til Dawn" campaign, designed to keep people in the city after work or bring them in after the end of the day, stimulating Melbourne's night-time economy.

Lord Mayor Sally Capp joined the fun after officially launching the installation on September 7, which she said was "giving Melburnians more reasons to shimmy into a Friday night in the city".

"Melbourne's night-time economy continues to boom," she said.

"In July, night-time spend was \$287 million, a 15 per cent increase on July 2019. Night-time pedestrian activity in July was up seven per cent on June, so we are predicting this momentum to strengthen as we head into the warmer months."

The installation is brought to the city by Uniquely Melbourne and produced by Vee agency. ●



▲ (Left and far right) CCTV footage captures intruders taking items from the store, and (main centre) Mars King fashion store owner Polly Zhang counts her losses after intruders broke in. Photo: Brendan Rees.

## Retail owner shattered after \$100K of designer wear stolen

*Continued from page 1.*

"We've lost about \$100,000 and are still counting," she said, adding staff later found a crowbar in a box.

"I thought that it would be safer here [on Swanston St], but it's not. We prayed it was going to be better."

Ms Zhang said her iPad was allegedly stolen during the burglaries, but using the Find My app, which makes it easy to locate Apple devices, she tracked the iPad to Bourke St on

the same day as the break-ins.

Accompanied by her lawyer, they found a woman with Ms Zhang's iPad, as well as holding scissors in the street. They immediately called Triple Zero.

Police confirmed a 21-year-old Carlton woman was arrested in Bourke St at around 8.30pm.

She was charged with burglary, theft, handling stolen goods, six counts of resisting police, two counts of possessing a controlled weapon,

and committing an indictable offence on bail. She was remanded to appear at the Melbourne Magistrates' Court on September 18.

At the time of publishing, police said they were trying to locate two outstanding offenders. Police said no arrests have been made in relation to the theft in June and are investigating.

Ms Zhang said she had passed the CCTV footage to police and would await the return of her partner who is

overseas to consider their next steps, saying, "we don't want to give up".

Anyone who witnessed the incident or has information is urged to contact Crime Stoppers on 1800 333 000.

Ms Zhang said one man appeared to be wearing a grey hoodie and carrying a black backpack while another was wearing a high-vis orange jumper.

Meanwhile, police arrested seven teenagers aged 15 to 18 after they

allegedly entered a department store on Bourke St at around 4pm on September 13, in which they ransacked displays and fled on foot.

Detectives and uniform members swooped on the group shortly after and seized stolen items from at least two different stores. They were taken into custody without incident.

Police will bolster their presence in September, with a specific operation named Cubed targeting shop steal offences involving large groups. ●

# CLEMENTINE'S

Made & Crafted in Victoria

Locally made gifts, homewares, accessories & fine foods

Supporting over 80 small makers across Victoria since 2011



www.clementines.com.au 7 Degraues St Melbourne, Vic 3000

# VOICE TO PARLIAMENT

## The referendum is an important moment for all Australians.

It is an opportunity for unity. We can't change our history, but we can move forward together.

## 全民公投對所有澳洲人都是重要時刻。

大家應當團結一致。歷史無法改變，但我們能夠攜手並進，開創未來。

## 全民公投对所有澳大利亚人来说都至关重要。

大家应当团结一致。虽然我们无法改变历史，但是能够把握前进方向，共同迈向未来。

## Cuộc trưng cầu dân ý là thời điểm quan trọng đối với toàn thể dân chúng Úc

Đây là cơ hội để chúng ta đoàn kết. Dù không thể thay đổi quá khứ, nhưng chúng ta có thể cùng nhau tiến bước về tương lai.

## يعتبر هذا الاستفتاء لحظة هامة في حياة جميع الأستراليين.

إنه فرصة لتأكيد الوحدّة. فإننا لا نستطيع تغيير تاريخنا، ولكننا نستطيع المُضي قُدُمًا معًا.

## Aftiqaadidu waa waqti muhiim u ah dhamaan dadka reer Australia.

Waa fursada midnimada. Ma bedeli karno taariikhdeena, laakiin horay ayaan u wada socon karaa.

[melbourne.vic.gov.au/voice](https://melbourne.vic.gov.au/voice)

Authorised by Sally Capp in Melbourne on behalf of Melbourne City Council



CITY OF MELBOURNE





# Community invited to have their say on Queen Victoria Market’s “people’s park”

WORDS BY *Brendan Rees*  
COUNCIL AFFAIRS

The City of Melbourne has officially launched community consultation for a 1.8-hectare park proposed for the Queen Victoria Market, which would be the largest of its kind in the CBD.

Under the plan, the existing open-air car park bordered by Franklin, Queen, and Peel streets would be transformed into a public square as part of a \$1.7 billion redevelopment of the southern end of the market by the council and global property developer Lendlease.

Known as the “people’s park”, the council said it would be a “welcoming, green space for people to savour the market experience”, while also being a place to “relax with family and friends and enjoy events and activations that will complement the historic market”.

To ensure the park meets the needs and desires of locals, the council is seeking feedback from the community on 11 design principles for the square, which it said would respond to the Market Square Charter and extensive community engagement.

Charters are developed as a tool for managing public places to ensure the intended vision for the space is realised and protected.

Proposed features for the park include an expansive lawn, native plants to improve biodiversity in the city, large trees to provide shade, a plaza to host events, and a play space.

A “garden of acknowledgement” is also planned and would be developed in partnership with Wurundjeri Woi Wurrung Cultural Heritage Aboriginal Corporation and Aboriginal Melbourne.

Another feature would be paving, planting and “ways of moving through the park to respectfully acknowledge the original cemetery”.

Community members will also have the chance to provide feedback on the proposed Queen’s Corner Building, which would provide

amenities for traders and the community, as well as provide areas for activations and creative experiences.

Engagement is now open and runs until Sunday, October 8. The council will host a range of activities, including pop-up sessions and stakeholder workshops.

“A new Market Square will transform our city’s north – creating a wide range of community spaces to boost visitation and improve the way Melburnians experience the iconic Queen Victoria Market precinct,” Lord Mayor Sally Capp said.

“We have an exciting vision for our ‘people’s park’, and we want to ensure our ideas resonate with the community, who’ll be making the most of this spectacular new city space.”

According to the council, ideas already raised for Market Square include respecting and fostering Aboriginal voices and connections to the place, as well as provide a place for quiet activities, respite and contemplation while respecting the city’s first cemetery at the site, and the continued presence of these burials.

The major redevelopment of the southern end of the market includes a proposal to build three towers (with the tallest being 49 storeys high) consisting of build-to-rent units, affordable housing, student accommodation and offices.

The existing heritage Franklin St stores on Franklin St would also be restored. However, the proposal has sparked concern from the community that the high-rise developments would “overwhelm and dominate the market”.

Construction is expected to begin in early 2024 and be completed in 2028, subject to planning and heritage approvals. ●

**For more information:**  
[participate.melbourne.vic.gov.au](http://participate.melbourne.vic.gov.au)

# No call yet on Greenline cyclists, construction due to start in April 2024

WORDS BY *David Schout*  
COUNCIL AFFAIRS

The City of Melbourne is still considering whether Northbank’s transformation will be cyclist-free, as construction is set to begin after 2024’s Moomba.

The council is weighing up whether to make Greenline a pedestrian-only path, as construction on the \$300m project scheduled to start in April next year.

The council has enlisted the help of Copenhagen-based urban design experts Gehl Architects to assist in determining whether cyclists should travel on the four-kilometre Northbank trail from Birrarung Marr to the Bolte Bridge.

In a September presentation to the Yarra River Business Association, Greenline director Mark Allan said in an ideal world the “city shaping” project would allow cyclists and pedestrians to coexist.

“How do we make it a space that people feel safe and comfortable in? We’re aware that people love riding bicycles in Melbourne, and we want to encourage slow speed active transport along the Greenline,” he said.

However, Mr Allan acknowledged that conflicts between those on foot, and those on two wheels, has the capacity to change how people feel about a space.

For years the City of Melbourne and Victoria Police have struggled to control the shared space across the Yarra River at Southbank Promenade, with a number of accidents and collisions recorded on the busy thoroughfare.

“It’s a question we’re very keen to address,” he said when asked if the council will bar cyclists from Greenline.

“We know that when pedestrians have to share space with cyclists that are moving at high speed, you feel unsafe and it’s uncomfortable. Importantly, we’re looking at a number of ways of sharing the space. We like the idea that you might be able to, at a slow speed, move along for four kilometres because for some, if you’re older, that’s probably a more efficient way to get along the Greenline. But there are a number of ways we’d look to do it, and that might be a combination of shared bike paths on adjacent streets, we might incorporate design treatment and materials and finishes that discourage high-speed bicycle users.”

Mr Allan said the decision on whether to bar cyclists was being considered, but at this stage he did not have an answer and said Gehl’s expertise would help them reach the right conclusion.

“We’re really pleased to be working with Gehl Architects, Copenhagen. For those [who] have visited there, clearly the Danes have a different mindset to how bicycles work in their downtowns. But importantly what they are doing is bringing international best practice to that. So, I haven’t got the solution here to say it’s definitely going to be separated, or definitely going to be shared – what we are going to do is work through that as we develop the detail in the precinct plans with our designers to make



▲ Greenline director Mark Allan provides an update on the \$300m project at a September Yarra River Business Association lunch.

everyone to feel comfortable in that space.”

It was also revealed that works on site one of the Greenline project, at Birrarung Marr east of Princes Bridge, would commence in April 2024.

Originally forecast to start in mid-2023, the works will see new boardwalks and native habitats installed by the end of next year.

“We will look to execute a contract this month with a builder, to start construction immediately after Moomba. We’d like to get some early works under way in the first 450 metres, roughly from the eastern end at Speakers Corner, and we’re going to build that almost to Federation Square. The program is at the moment an ambitious one, but we plan to be in the ground in April and then have that project largely finished in that calendar year.”

The Birrarung Marr precinct is the first of five precincts to be transformed as part of the Greenline project, with the other four precincts (from east to west) dubbed The Falls, River Park, Maritime and Saltwater Wharf.

Mr Allan said The Falls precinct, which includes the areas outside Banana Alley vaults, Melbourne Aquarium and Enterprize Park, was a sector they have identified as having the biggest upside.

“[It] is probably the one we would say has the greatest potential. Walking down there now, you can draw your own conclusions about how you feel in that space but there’s enormous opportunities to bring about change.”

The council has since confirmed that Synam Infrastructure has been awarded the contract to complete site one of the Birrarung Marr precinct, transforming the river’s edge from Batman Avenue to the eastern edge of Federation Square at ArtPlay with 450 metres of new boardwalks, viewpoints and green spaces for play and recreation.

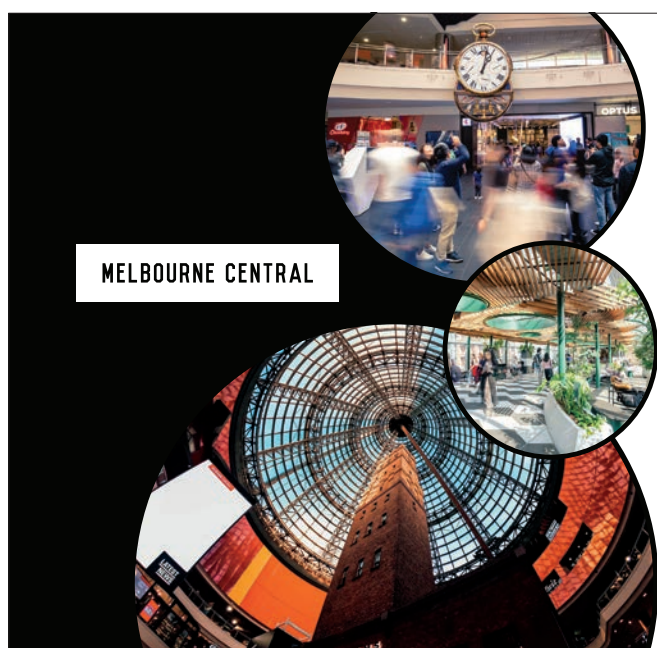
Detailed design and early investigative works for site one are expected to begin later this year.

## Citywide sale to fund Greenline?

In September the *Herald Sun* reported that the council was considering to sell Citywide in a projected \$300 million windfall, which could be used to pay for the remainder of Greenline.

The waste management company is a wholly owned subsidiary of the City of Melbourne that operates independently.

In response, a council spokesperson told *CBD News*, “We’re always looking at ways to enhance our assets to improve services for the community.” ●



## MELBOURNE CENTRAL

Our La Trobe Street & Lonsdale Street car parks are still open, ensuring hassle-free access to shopping, dining, and entertainment.

Don’t miss out on our amazing \$16 early bird parking rate – simply park before 10am and leave after 3pm

Enjoy all-day convenience in the heart of the city.

📍 Cnr of La Trobe and Swanston Streets, Melbourne

[www.melbournecentral.com.au](http://www.melbournecentral.com.au)

📷 @melbournecentral



Supporting business



Construction partner:  
**CP** Design & Construction

CYP-BS00372

## Mirvac wins Treasury Square project as locals left out of consultation

WORDS BY *Brendan Rees*  
PLANNING

Property developer Mirvac has reportedly been awarded a contract to develop a contentious site known as Treasury Square at the CBD's edge.

The 1.4-hectare VicTrack-owned site, which is located at the southern end of Flinders St next to the rail corridor, has been met with community concern in recent years due to little public consultation being conducted and the site not having urban design controls.

In January 2020, following the expression of interest (EOI) process, CBUS Property, Mirvac, Dexus/John Holland, and Brookfield Property had been shortlisted to advance to stage two of the sale process to request proposals.

CBUS Property and Mirvac were selected as the two preferred bidders in May. However, VicTrack did not confirm Mirvac had recently been chosen as the preferred developer, despite media reports from anonymous sources close to the project suggesting otherwise.

Instead, a VicTrack spokesperson said as development was proposed to take place above a busy rail corridor, "there are a range of complex technical issues being resolved as part of the design process".

"We continue to work with the preferred bidder and our transport partners to develop this prime site into a new commercial and residential precinct," the spokesperson said.

Conceptual renders produced as part of the EOI process show three towers on the land spanning Flinders Street railyard to Wellington Parade South.

Under the plans, the rail lines east of the Russell St Extension to Batman Avenue would be decked over to form what could be Federation Square East. A new pedestrian and cycle link between the city, parks and the Yarra River has also been proposed.

However, Mirvac would have freedom when it comes to what to build on the site, which, in November 2021, prompted City of Melbourne Cr Rohan Leppert to request that the then Minister for Planning Richard Wynne urgently apply design controls to Treasury Square.

According to VicTrack as the site had been rezoned to enable the development, "any final design is subject to approval by the relevant planning authorities which will take into account existing planning controls, including protecting the Yarra River and Birrarung Marr from overshadowing".

"Some changes to the original scheme presented will be required as further technical assessments of the site continue and planning conditions are applied, however it is still intended to be a landmark development," it said.

"While COVID-19 has had an impact on the Melbourne CBD property market, this is a highly sought-after site and will be one of the few above rail developments in Melbourne." ●

## City mourns after Bourke St tragedy as traders hope to see visitors return

*Continued from page 1.*

"If the city is activated with buskers and night-time activity, whether the cafes or restaurants are full and lively, and then you've got that passive surveillance as well," Cr Capp said.

"You feel safer walking down the street if you feel that it's got more of a festive atmosphere, rather than if it's quiet."

Melbourne Chinatown Business Association president Christina Zhao said the community was understandably shaken by the incident but encouraged visitors to support local businesses.

"Safety is always the most important thing, but I also urge people to not be scared of coming back to the city to enjoy the great food and vibes in the City of Melbourne. It is our city, and as an endorsed association, we will do our best to support the businesses," she said.

*CBD News* spoke to traders in Bourke St days after the incident, who said that police, on occasions, turned a blind eye to crime on the street.

"They [offenders] are violent sometimes, they come in the shop and try to steal," one trader, who asked to remain anonymous, said.

Just moments before speaking of their concerns, they said a man punched a pole and yelled at people on Bourke St with no police around.

In the week before the tragic incident, *CBD News* witnessed a man causing a disturbance and shouting at customers and staff at a fast-food restaurant on Bourke St, in which he also grabbed a donation tin to assess its contents while two police cars were parked at the front door.

Victoria Police Commander Mark Galliot said he acknowledged the community was concerned about the latest incident but maintained "Melbourne remains an overwhelmingly safe place to live and visit".

"I think what we find at the moment is that Melbourne has that nice balance of security, safety, but also being accessible," he said.

"We'll certainly review what's occurred over the next weeks and months and no doubt the coroner will also look into a range of recommendations, and we will be guided by the coroner and other expert reports."

However, asked if Bourke St had been subject to copycat attacks, Commander Galliot said



▲ Part of the scene on Bourke St following the crash.

there had been "three major incidents" and "it's understandable to think that it's now more than a coincidence that this has occurred".

Monash University Accident Research Centre Associate Professor Dr David Logan said installing retractable bollards in the middle of Bourke St would be a practical approach but acknowledged implementing such a solution came with its complications.

"My view on the bollards is that from a practical and safety point of view I think they're probably the only feasible solution because you need some physical way of preventing vehicles from getting into the pedestrian parts of the mall," he said.

"However, there are significant practical considerations with them because emergency service vehicles need access and trams need to come through. I'm presuming Melbourne City Council vehicles also have to get in regularly, so the issue is more practical than it is a safety issue."

RMIT professor of planning Michael Buxton agreed retractable bollards were worth considering, saying the "technology does exist" and a "training program would be very important".

"The Bourke Street Mall is a problem because cars can come into it but then they can speed through the Swanston St intersection, and they can go up to Russell St where this latest incident occurred," he said.

President of CBD residents' association EastEnders Stan Capp said while he applauded the services of Victoria Police, he reiterated calls for a safety and security committee, as seen in neighbouring Southbank, to be established for the CBD community.

"The people I speak to register safety in the



streets of Melbourne as being a major concern," he said.

"Our request is to form a safety taskforce with the highest levels of the various stakeholders represented who can oversee this with a view to maximising the benefits to the overall community."

Professor James Ogloff, a clinical and forensic psychologist at the Swinburne University of Technology, said access to mental health treatment, medication, and support services can help reduce the risk of violence.

"While there may be a correlation between certain mental health conditions and violence in specific cases, it's essential to avoid stigmatisation and recognise that most individuals with mental illnesses are not violent," he said.

"Addressing the underlying causes of violence, improving access to mental healthcare, and promoting understanding and empathy can contribute to a more accurate and compassionate perspective on this issue."



### A poem for the people

After the murder of restaurateur Sisto Malaspina in 2018, then Prime Minister Scott Morrison visited Pellegrinis café in Bourke St, to give his condolences.

When Natalina Angok was murdered in Celestial Lane 2019, locals lit candles for her and laid floral tributes on the footpath.

After the drive-through tragedy on the

corner of Russell and Bourke streets on Friday, September 8, a CBD worker wrote a poem. He taped it to a tree close to where John Haasz was killed.

"On Saturday morning the city felt like a ghost town. The people were quiet, solemn and the streets were barren. No-one wanted to be here."

Two other poets followed his lead. ●

# SAVE THE NICHOLAS BUILDING

Melbourne's iconic Nicholas Building is at risk of being turned into luxury apartments, a hotel, or a soulless commercial space, pushing out the hundreds of creatives who work there.

Join the campaign to save the Nicholas Building: Sign the open letter at [SaveTheNicholasBuilding.com](http://SaveTheNicholasBuilding.com) or scan this QR code.



**ELLEN SANDELL**  
GREENS STATE MP FOR MELBOURNE

(03) 9328 4637  
office@ellensandell.com  
146 Peel Street  
North Melbourne VIC 3051



**THE GREENS**

# Fresh faces setting Chinatown business precinct on a new path

WORDS BY *Jack Hayes & Sean Car*  
BUSINESS

Christina Zhao is no stranger to the City of Melbourne's Business Precinct Program.

Serving as the inaugural president of the Melbourne City North Association, Ms Zhao is now the new face of the council-endorsed business precinct for Melbourne's Chinatown.

Along with a new committee and advisory board, the Melbourne Chinatown Business Association (MCBA) promises to take what is the oldest Chinatown in the western world on a new path of "unity and cohesion."

According to Ms Zhao, the MCBA's mission is to revitalise and empower Chinatown's businesses and community; through strategic partnerships, advocacy, and innovative programming, they promote economic development, cultural preservation, and social equity in the precinct.

"Melbourne is so diverse. We want to keep the history and culture of Chinatown, while showcasing the other cultures that call it home," Ms Zhao said.

"We are working closely with other precincts in the CBD, including the Melbourne City North Business Association, to create a sense of unity among businesses in the city, and bring new events for Chinatown, not just focusing on the Lunar New Year, but new concepts to bring people back into the city and bring people to precinct."

Following a turbulent three years for Melbourne's Chinatown, with COVID-19 ravaging business trade and a constant state of flux in the business community with the council endorsing three different business associations in that time, it's hoped these fresh faces provide the stability its members crave.

Committee member and events professional, Ngoc Lee, told *CBD News* the MCBA would serve its purpose of providing a "bridge between council and traders, while driving



activity through events and campaigns".

"We know how busy our traders are running their own businesses and know it's often hard to find times to network or collaborate with others around them," Ms Lee said. "We want to provide convenient opportunities for them work with everyone in the city not just the precinct, because if it benefits the city, it benefits Chinatown, and it benefits our members."

The establishment of the Melbourne Chinatown Business Association marks the latest chapter in what's been a turbulent few years for the City of Melbourne's precinct program in Chinatown.

Until 2021, the precinct was led by Chinatown Precinct Association (CPA) for more than two decades under the leadership of former president Danny Doon, and vice-president Eng Lim.

In 2022, the CPA's era came to an end after the council defunded it in preference of the newly formed Melbourne Chinatown Association (MCA) led by Jing Jun (JJ) Heng and Trevor Du, who served as president and vice-president, respectively.

While the MCA promised to shake things up

for the struggling precinct post-COVID with a new "modern touch", the council chose not to renew its funding as part of its precinct program, instead opting for a new direction again under the MCBA.

The council didn't confirm its reasons for not renewing funding for the MCA when contacted by *CBD News*. The group's president JJ Heng was also contacted for comment.

It's understood the group struggled to attract enough members during its first year of operation, with the council confirming the new MCBA already has a verified membership database of 100 members.

In thanking both the MCA and CPA for their contributions, Lord Mayor Sally Capp said the council was looking forward to working with the new group through the "vital" work of its precincts program.

"There are many fantastic organisations and individuals who work tirelessly for Melbourne, and we thank JJ Heng and Trevor Du from the MCA, plus Eng Lim and Danny Doon from the CPA, for their service, support and passion in driving visitation and spend to the precinct," Cr

Capp said.

"Small businesses make up 74 per cent of Melbourne's trader network – and our precinct associations play a vital role in bringing them together to share ideas and boost local spending."

"Our Business Precinct Program has supported business and precinct associations for more than 20 years – creating invaluable opportunities for networking, education and training, while attracting more people to every corner of our city."

Despite not receiving any council funding, both the MCA and the CPA still operate as trader groups in Chinatown.

The council says it will invest more than \$850,000 in 2023–24 to support business and precinct associations across the city to continue creating "opportunities for business networking, education and training, and initiatives to encourage visitation and local spending".

The MCBA is one of 10 precinct associations in the municipality, and one of five based in the CBD, awarded up to \$120,000 this financial year as part of the program, which also includes:

- Carlton Inc.
- City Precinct
- Collins Street Precinct Group
- Docklands Chamber of Commerce
- Greek Precinct Association
- Kensington Business Association
- Melbourne City North Business Association
- North & West Melbourne Precinct Association
- Yarra River Business Association

The MCBA will receive funding for the next 12 months under year three funding of the Business Precinct Program 2021-25. ●

**For more information:**  
[melbournechinatownbusiness.com](http://melbournechinatownbusiness.com)

**WAKUDA**  
JAPANESE RESTAURANT | ROOFTOP BAR | KARAOKE

TAKE LIFT TO LEVEL 3  
MID CITY CENTRE, 200 BOURKE STREET, MELBOURNE  
[WWW.WAKUDA.COM.AU](http://WWW.WAKUDA.COM.AU) / 03 9663 7756

STUDENT DEALS EVERY WEDNESDAY  
LIVE MUSIC ON THURSDAYS  
HAPPY HOUR 4-7PM THURSDAYS & FRIDAYS

**BOOK NOW!**

SCAN HERE  
TO CLAIM YOUR FREE ROUND OF DRINKS!

**Say Yes to an Indigenous Voice to Parliament**

Senator Linda White  
SENATOR FOR VICTORIA

Labor

Voting in the referendum is compulsory. Not voting may result in a fine.

Authorised by L. White, Australian Labor Party, 62 Lygon St Carlton VIC 3053

**中秋 Autumn Moon Festival Celebrations**  
30 SEP - 5 NOV PROGRAM

CHINESE MUSEUM

Event Partner: MCBA, Media Partners: RFL, welif, SRS, Sponsors: MBS, HYPERLOCAL, VICPROP, STONEBRIDGE

ADVERTISEMENT  
Your City of Melbourne community update

## CELEBRATING OUR CITY'S HERITAGE FOR THE FUTURE

Recognising and celebrating the social and architectural heritage that defines our streets and neighbourhoods is an essential part of our planning work as Melbourne continues to grow and change.

We're currently reviewing the heritage of our municipality to better understand its physical, social and cultural value, and to find out what distinguishes it from other municipalities in Melbourne.

Early next year, we'll begin consultation on our draft heritage strategy which will guide our work for the next 10 years.

We will engage with the community about the challenges and opportunities that heritage can help address, after we release our discussion paper.

To stay up to date, visit [participate.melbourne.vic.gov.au/heritage-strategy](https://participate.melbourne.vic.gov.au/heritage-strategy)



## WHAT DOES HERITAGE MEAN TO YOU?

Places of cultural significance often provide a deep and inspirational sense of connection to community and neighbourhoods, to the past and lived experiences. They can also help to build our future.

Think about which heritage places are important to you, and imagine which sites Melburnians might cherish into the future.

Share your memories, images and love letters for all things that celebrate Melbourne's heritage at [participate.melbourne.vic.gov.au/heritage-strategy](https://participate.melbourne.vic.gov.au/heritage-strategy) or tag #TimelessMelbourne on social media channels.



The collection features Moomba and Olympic memorabilia along with contemporary Aboriginal artwork



## TREASURES TELL THE EVOLVING HISTORY OF MELBOURNE

### A wander around the fourth floor of Melbourne Town Hall is like entering a portal to the past.

From the first brick ever laid in the city, anti-Vietnam War posters, and a tea set made for Queen Elizabeth II to photo albums filled with black and white photos of potholes, and the keys to the city, the City of Melbourne Arts and Heritage Collection is a veritable treasure trove of the eclectic and authentic.

With more than 13,000 items on display, the collection is a tangible reminder of the stories, people and events that have shaped our city - and our psyche.

Members of the public can take a walk back through memory lane with the 16-room collection now open for guided tours three days a week.

The items are a celebration of all that is synonymous with the city, with Eddie Butler-Bowdon, Arts and Heritage Collection Program Manager, declaring it "the best capital city collection in the country".

There's Lord Mayors' chairs, ceremonial robes, reliquary, the Melbourne Coat of Arms, Melbourne 1956 Olympics mementos, and shelf upon shelf of civic gifts and miscellaneous Melbourne memorabilia.

It's hard to play favourites, but for Eddie, a commemorative Moomba-branded bottle of 1980s sparkling Spumante is high on the list.

"It would've been awful but it really captures a moment in time," he said.

Alongside the bubbles is a slew of Moomba keepsakes, parade float decorations, portraits of Moomba monarchs resplendent in their crowns and photos of Moomba Masters champions.

Amongst the glamour and the gawdy is an extensive collection of civil engineering records including municipal plans and maps, street signs and parking meters.

The collection is ever-evolving and increasingly reflects the inclusiveness of our city.

With both artworks and heritage items, it reflects Melbourne's proud multiculturalism while also celebrating the traditional custodians of the land, the Wurundjeri Woi-Wurrung and Bunurong Boon Wurrung peoples.

While the artworks by contemporary Aboriginal artists are some of the more recent additions to the collection, they celebrate the oldest continuing culture in the world, spanning more than 60,000 years.

An emu feather skirt by Yorta Yorta artist Lyn Thorpe and a plate-steel maquette of a traditional eel trap provide a rich insight into the traditions and culture of the First Peoples of the land.

Eddie said the once-in-a-lifetime relocation of the collection from Little Bourke Street to Melbourne Town Hall means all items are now housed in a purpose-built temperature and humidity-controlled environment to preserve the pieces and their quality.

The relocation has also made way for our landmark Make Room project, with 50 studio apartments to be built for our most vulnerable community members at the Little Bourke Street site.

Lord Mayor Sally Capp said she was pleased the collection had returned to its spiritual home at Town Hall and was now open for the community to enjoy.

"This is a collection you can't see anywhere else," she said.

"The collection tour will take people on a journey through historical events and moments in our history, beautifully captured by some of our most famous artists and photographers."

You can explore it all during a one-hour tour every Tuesday, Thursday and Friday at Melbourne Town Hall, 90-130 Swanston Street, Melbourne.



Josh Muir, Dootigala before Batmania #1, 2022

Book online at [whatson.melbourne.vic.gov.au](https://whatson.melbourne.vic.gov.au)

## Six things we love about Melbourne's heritage buildings



**Want to makeover your heritage property? Before you get to work, find out what makes your historic building so special, and if you're eligible for a heritage grant.**

Beautiful heritage buildings help make our city a great place to live, work and visit, so we have contributed \$300,000 to a multi-year heritage funding program to help people keep them looking tip-top.

A little restoration work can go a long way to transform your building and keep it in great condition for years to come. But do you know your tuck-pointing from your parapets?

Here are six common heritage features to look out for on Melbourne streets.

### Tuck-pointing

When two colours of mortar are used to give the impression of very fine brickwork joints. As well as looking beautiful, tuck-pointing can extend the life of a wall.

### Polychromatic brickwork

When bricks of different colours are arranged in a pattern to highlight architectural features. Paint may need to be removed to reveal the beauty of this stunning brickwork, which originated in the 1860s.

### Decorative keystones

The wedge-shaped stone piece at the apex of a masonry arch, such as a door or window. For decoration, keystones (also known as capstones) are often made larger than what is structurally required.

### Parapets

An extension of a wall beyond the edge of a roof, such as a guardrail, terrace, balcony or walkway. A parapet was originally used to defend buildings from attack.

### Decorative cornices

The decorative trim where a wall meets a roof or ceiling. Cornices originated in Greek and Roman

architecture and can be found on the inside and outside of buildings.

### Pediments

A decorative gable, usually positioned above a doorway or window and triangular in shape. Pediments are most often found in classical and neoclassical architecture.

If you own a heritage building in the City of Melbourne, located within a heritage overlay, you can apply for funding year-round.

The works you have in mind must be visible from the public realm.

We've also launched a special funding stream for landmark properties, and those that belong to or are leased by not-for-profit, charity or community groups.

For information on heritage grants or for a copy of the Heritage Owners Guide and the Heritage Design Guide, visit [melbourne.vic.gov.au/heritage](https://melbourne.vic.gov.au/heritage)

ADVERTISEMENT  
Your City of Melbourne community update



# JOURNEY THROUGH TIME: A GUIDE TO LOCAL HERITAGE IN MELBOURNE

When you think about local heritage, some will reflect on significant places and buildings, while others might linger in open spaces to close their eyes and imagine times past.

**Melbourne's heritage is a rich tapestry of Aboriginal and much later colonial and post-colonial stories.**

We can look for heritage in all sorts of places, traditions and objects. Even culture itself. It speaks to buildings, landscapes, public parks and gardens, trees, infrastructure, monuments, public art, community groups and more.

Heritage places may even encompass street art, laneway cafes and the hum of numerous small businesses and artists' enterprises, nestled away in the Nicholas Building and other favourite city buildings.

### Deepen your understanding of local Aboriginal heritage

Did you know that a blue saltwater lagoon once stretched out across what would later become West Melbourne and Docklands? Or that the high ground now known as Parliament Hill has been a site of law and lore-making for millennia?

Learn about places of Aboriginal cultural significance through our Mapping Aboriginal Melbourne project. It's a powerful truth-telling tool that reveals Aboriginal peoples' deep connection to this country. Learn more at [aboriginal-map.melbourne.vic.gov.au](http://aboriginal-map.melbourne.vic.gov.au)

You can also take a self-guided walk from Fitzroy Gardens to Docklands to learn more about Aboriginal heritage and culture, including scarred trees, historical meeting places and monuments, or book a tour with an experienced guide from the Koorie Heritage Trust at Federation Square.

### Get to know the history of your neighbourhood

Reflect on the communities that shaped your local neighbourhood, from Carlton's Italianate Royal Exhibition Building, which opened in 1880, to the maritime heritage of Docklands, and the cobblestones of Kensington's Newmarket saleyards and the Youngusband woolstore.



At the City of Melbourne, we have completed contemporary heritage reviews for many neighbourhoods to help prevent buildings, natural spaces and streetscapes for future generations. Reading these is a great way to learn more about the history and heritage of your local area.

### Walk your way around local heritage sites

We offer a range of curated walks and itineraries to help you get to know Melbourne's iconic sites, cultural heritage and hidden gems.

Whether you want to learn about sites of spiritual, cultural and political significance on an Aboriginal Melbourne walk or check out the gothic revival facades, art deco jewels and neoclassical monoliths on a Classic icons and architecture walk, there's something for everyone on one of more than 10 self-guided walks. Visit [melbourne.vic.gov.au/walks](http://melbourne.vic.gov.au/walks)

### Work, dine and play in historic surrounds



Explore four floors of food, drink, music and art at a mega venue lovingly woven into the fabric of a heritage building on the corner of Lonsdale Street and Drewery Lane. HER Melbourne has breathed new life into a Federation warehouse built in the early 1900s.

Over on the corner of Queen and Collins streets, pause to gaze up at a Melbourne Award-winning feat of urban design. Drab cubicles and flickering fluoros begone - Queen and Collins is a next-gen workplace with neo-gothic flair.

Patrons at theatres including the Princess, Regent, Comedy and Her Majesty's enjoy the splendid facades and ornate interiors alongside world-class entertainment. The Arts Centre spire became an iconic feature of the city's skyline since its construction in 1984.

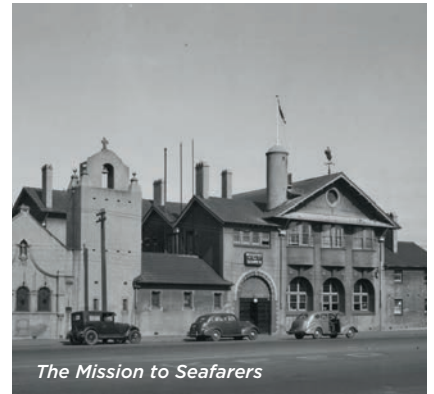
### Wander through heritage parks and gardens

The Royal Botanic Gardens were established in 1846, on a site selected by Lieutenant Governor Charles La Trobe. In the past 170 years, staff at the gardens have collected and planted thousands of plants from all over the world, representing 12,000 species.

Explore the gardens on an Aboriginal Heritage Walk and learn about Traditional Owners use of plants as a source of food, tools and medicine and the ongoing connection to Country.

Pause in the peace of the Parliament Gardens and reflect on the statues of Sir Douglas and Lady Gladys Nicholls, which honours a couple who strongly advocated for Aboriginal self-determination and reconciliation.

We're working with Traditional Owners to celebrate Aboriginal connection to Country in our Greenline Project along the north bank of the Birrarung. Five interconnected precincts will make up the Greenline Project - Birrarung Marr, The Falls, River Park, Martime and Salt Water Wharf, each named to reflect its cultural and historical significance.



The Mission to Seafarers



Melbourne Town Hall

### Spot landmark buildings from the gold rush

Victoria experienced unparalleled prosperity after the gold rush of the 1850s. Many buildings that are still standing today were built with funds that flowed from the riches of the diggings.

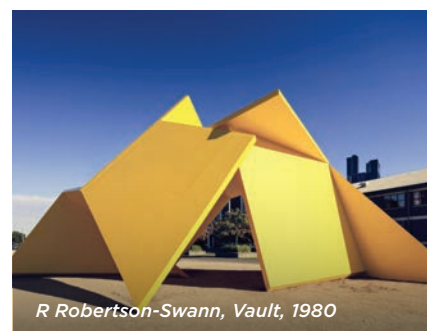
Notable buildings of the century include State Library of Victoria (its famous domed reading room was completed in 1913), Melbourne Town Hall - once the city's premier concert venue, and the Gothic Revival-style ANZ bank building at the corner of Collins and Queens streets.

### Marvel at post-war and edgy modern architecture

American-style skyscrapers such as Orica House emerged in Melbourne from the 1950s, and the Hoddle Grid Heritage review protected and celebrated our best post war commercial buildings.

Learn more about post-war architecture on a self-guided walk. Visit [participate.melbourne.vic.gov.au/heritagewalks](http://participate.melbourne.vic.gov.au/heritagewalks)

The shards of Federation Square's buildings, ACCA's sharp edges, the abstract yellow Vault artwork and a quirky office for Monaco's consul-general in a tiny city laneway are destined to be conversation pieces among Melburnians for years to come.



R Robertson-Swann, Vault, 1980

To learn more about our city's heritage visit [melbourne.vic.gov.au/heritage](http://melbourne.vic.gov.au/heritage)

## KEEP IN TOUCH

To stay connected with all the latest news from the City of Melbourne, follow us on social media and subscribe to *Melbourne News* at [news.melbourne.vic.gov.au](http://news.melbourne.vic.gov.au)

### Connect with us

[/cityofmelbourne](https://www.facebook.com/cityofmelbourne)  
[@cityofmelbourne](https://www.instagram.com/cityofmelbourne)  
[@cityofmelbourne](https://www.twitter.com/cityofmelbourne)





## Pakana woman Lola Greeno takes out Macfarlane Prize

*Lola Greeno, a Pakana woman, has been awarded the \$50,000 2023 Don Macfarlane Prize at Craft in the CBD.*

WORDS BY *Edmund Coleman*  
PHOTOGRAPHY BY *Hanna Komissarova*

Born and raised on Truwana/Cape Barren Island, Ms Greeno creates traditional Tasmanian Aboriginal shell necklaces made from shells found on the shores and shallows of Truwana. Ms Greeno has traced the specific technique she uses back six generations in her family, and now teaches the “centuries-old”

practice to her granddaughters and communities through workshops.

The stunning, iridescent adornments are made using a process “the old women called stringing,” Ms Greeno told *CBD News*. The artist collects shells from spring to the end of autumn, and “strings” during the winter.

For Ms Greeno, the process of collecting shells is deeply meditative. “The collecting part is very therapeutic. I’ve lost my mother and I’ve lost my mother-in-law. We used to go to the beach, and we would tell one another stories while we were there,” Ms Greeno said.

“Just to walk along the white gravelly beach and pick up what we call ‘little black crows,’ that’s very therapeutic in itself.”

The Don Macfarlane Prize is an initiative of the Macfarlane Fund, a \$50,000 no-strings-attached cash prize awarded to a senior Australian artist for their “unwavering practice,

ongoing cultural contribution and leadership in the Australian visual arts sector.”

The committee who awarded Ms Greeno the prize noted that, “Lola’s work is embedded in community and teaching and builds upon historical tradition, yet it uniquely her own, displaying a mastery of skill and visual language that is instantly recognisable.”

Ms Greeno appreciated that the prize will give her “the flexibility and freedom to continue to make work, and to run workshops as it is so important for me to pass on knowledge to future generations.”

Melissa Macfarlane said that the prize was a “lifetime achievement award.”

The committee also praised Ms Greeno’s work as an exercise in sustainability. When collecting shells Ms Greeno — who is also an Aboriginal advisor for “Sea Country”, which trains rangers through the Tasmanian

Aboriginal Centre — has certainly seen the effects of the climate crisis, describing the impact she has seen firsthand as “awfully destructive”.

Although a master of her craft, Ms Greeno only started stringing in her fifties. In her earlier years as an artist, Ms Greeno told *CBD News* that “I wasn’t ready to share the information at the time, and I didn’t think I needed to. I thought no, that belongs to my heart.”

“But having gone through and looked and listened to other artists, I thought no, no, it’s important to share your story as much as you can.” ●

**For more information:**  
[thamacfarlanefund.com.au](http://thamacfarlanefund.com.au)

## A little less conversation, a little more musical

*When producer David Venn began floating the idea of an “Elvis Musical”, his mother was ecstatic.*

WORDS BY *Edmund Coleman*

As a “massive” Elvis fan growing up, “[my mother] was one of the biggest advocates,” laughed Venn, who is head of David Venn Enterprises, a multi-award-winning entertainment and events company behind *The Wedding Singer* and *Bring It On The Musical*.

*Elvis: A Musical Revolution*, is a new bio-musical written by acclaimed international writers that tracks the king of rock n roll’s rise from a “dirt-poor shotgun shack” in Tupelo, Mississippi, to his legendary ‘68 *Comeback Special*.

Authorised by Elvis Presley Enterprises, *Elvis: A Musical Revolution* has been in the works for more than four years. “At the time when all the discussions started, we didn’t even know there was a movie,” Mr Venn told *CBD News*. “So, it all kind of lined up quite well.”

In terms of scale, Mr Venn said that it was the biggest show his company had taken on to date.

“I think because of the status of Elvis, you know, the show has to live up to that hype and the expectation that comes with that,” he said.

Following a nation-wide talent search with more than 700 applicants, theatre and television star Rob Mallet was selected for the lead role.

“I have been influenced by people who have been influenced by Elvis and I didn’t even know it,” Mallet said. “[Elvis] is so deeply ingrained in the fabric of our culture. It is an absolute honour to have the opportunity to play him.”

Featuring more than 40 Elvis hits, Mr Venn paused while considering his favourite: “I think one of the most exciting moments we have in the show is *Heartbreak Hotel*.”

“It falls at a moment when Elvis does one of his first live performances. The audience gets to see [Elvis] really strike these moves, and hears that sound when the fans



start to go crazy. It’s really the moment where a star is born before your eyes,” he said.

“Audiences love to cheer through that, and you get quite excited when his hip swing starts and all his moves.”

Mr Venn laughed when asked about Elvis impersonators coming to the show.

“Yeah, there have already been many that came to our Sydney season, so I would expect the same in Melbourne. There’s a whole new community of people who love everything to do with Elvis,” he said.

“I think the greatest discovery has been the community aspect and how much [Elvis] does mean to people.”

“That’s something we have taken on board and have responsibility for: trying to celebrate the idea or the memories that people have of him in the most positive way that we can.”

“Trying to work to keep the spirit alive.”

*Elvis: A Musical Revolution* shows at the Athenaeum Theatre from September 30 to October 18. ●

**For more information:**  
[elvisamusicalrevolution.com.au](http://elvisamusicalrevolution.com.au)

## China’s National Symphony Orchestra to tour Melbourne

*The China National Symphony Orchestra (CNSO) will return to Australia this year following a six-year absence and will play at Southbank’s Hamer Hall on December 2.*



The more than 80 musicians who make up this world-class orchestra under the baton of CNSO’s conductor Maestro Li Xincao will perform one concert only at Sydney, Adelaide and Melbourne on November 28, December 1 and 2, respectively.

The prestigious conductor Xincao has led the CNSO for historic visits around the world, winning high praise from authoritative music critics everywhere, proving his adaptability to different programs and his correct understanding of different styles of works.

The concert also features violinist Lu Siqing, the first Asian prize-winner of the Paganini Competition, one of the world’s most important violin competitions which is held every two years at Carlo Felice Theatre in Genoa, Italy.

Well-recognised as one of the most outstanding Chinese violinists, Siqing performs regularly with major national and international orchestras, and has performed in prestigious concert halls in more than forty countries and territories, including

the Musikverein in Vienna, Avery Fisher Hall and Alice Tully Hall in New York City, Hollywood Bowl in Los Angeles, and the Sydney Opera House, among others.

The CNSO, founded in 1956, is the most outstanding Chinese orchestra and has been instrumental in promoting and developing the art of symphonic music in China, introducing Chinese audiences to a large repertoire of classical, romantic, modern, and contemporary orchestral works by both Western and Asian composers.

This is a unique opportunity for Australian audiences to experience exquisite music and witness the supreme skill and artistry of the orchestra.

The CNSO will perform at Hamer Hall on December 2 at 2pm. ●

**For more information:**  
[artscentremelbourne.com.au](http://artscentremelbourne.com.au)

# Come for Wakuda's dining, and stay for the karaoke

*There is a new venue calling Melbourne's Midcity Centre home promising to deliver a dining and entertainment experience that "fosters connections and creates lasting memories through the universal pleasure of good food and fun times".*

WORDS BY *Jack Hayes*

When you step into Wakuda Japanese Restaurant, you're instantly transported to Japan.

The decor, the apple blossoms, the furnishings, the vibe; it's like a mini-Japanese getaway. And the staff, well, they don't just serve great food; they sprinkle a little "omotenashi" (Japanese hospitality) on everything.

"Who doesn't love a dining experience that's more than just a meal, but a story you'll retell to your friends?" owner John Wong said. "Wakuda is that kind of place, where every bite and every moment make memories that last."

"There's something for everyone here. We've spent the past few months rebranding to introduce new spaces, new menus, offer private function packages and entertain the late-night crowds with karaoke and a cocktail bar."

"There's a genuine passion that drives our team. It's our privilege to be able to bring people together, celebrate diversity, share memorable moments, showcase culinary creativity, and strive for continuous improvement."



Wakuda is a place where you celebrate the big stuff and the small stuff.

The multi-storey venue is an all-in-one offering, providing locals with the ultimate spot for your spring or summer late afternoon drinks on the rooftop balcony, before you move indoors to enjoy shabushabu hot pot in a private booth or share some of their signature dishes.

Next on your night at Wakuda is a few cocktails at the level-three bar, and then finish your night off with karaoke in one of the five VIP rooms.

Wakuda's head chef Bob San said that he loved what his career as a chef had given him, and that "creating culinary dishes is an art".

According to Mr Wong, customers are raving about Wakuda's latest signature dishes curated by his head chef, like their truffle string scallops and tuna tacos.

"Even something as simple as edamame, with a touch of Wakuda spicy sauce creates



something extraordinary," Mr Wong said.

"The secret? It's all about using fresh ingredients and well-rehearsed culinary skills that add a magical touch and leave you craving more."

Mr Wong is also part-owner of Tian38 on Flinders Ln which offers a contemporary and progressive approach to Singaporean Chinese cuisine.

Tian38 have been awarded numerous hospitality industry awards including Asian Good Food Guide Readers' Choice Award for 2022 and 2023, as well as Victorian Restaurant & Catering Award Asian Finalist two years in a row.

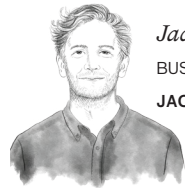
Mr Wong believes that food is one of the most authentic ways to experience a culture. It's not just about flavours and ingredients; it's about the stories, histories, and traditions that come together on a plate.

With five private VIP rooms available for private group bookings of 10, 15 or 25 guests, each




equipped with state-of-the-art sound systems and furnished with comfortable leather seating. The Karaoke experience is the perfect way to entertain your guests after dinner, or perhaps kick start your bachelorette party. ●

**For more information:**  
[wakuda.com.au](http://wakuda.com.au)




*Jack Hayes*  
BUSINESS EDITOR  
[JACK@HYPERLOCALNEWS.COM.AU](mailto:JACK@HYPERLOCALNEWS.COM.AU)

## Wish your inbox was more local?



Scan the QR to sign up to our Newsletter



**CBD NEWS**

YOU'RE INVITED TO JOIN US FOR

# The SCOTS' CHURCH Proms

*incorporating 'The Big Hymn Sing'*

**2pm Sunday 24 September**  
**A DELIGHTFUL AFTERNOON OF MUSIC, FUN & FOOD**

**ADMISSION FREE**  
**cnr Russell and Collins St, Melbourne**

# Forty randomly selected locals to make up “people’s panel” on affordable housing

“

*The City of Melbourne says “now is the time” to create an Australian-first community panel on the complex issue of affordable housing.*

”

WORDS BY *David Schout*  
HOUSING

A panel of 40 randomly selected local residents could shape City of Melbourne policies on affordable housing as part of a new “people’s panel”.

The move would see members, recruited by an independent recruitment consultant and set to be representative of the municipality, take part in three all-day sessions and provide recommendations that the council would implement “to the maximum extent possible”.

The “Affordable Housing People’s Panel” would consider ideas and deliberate under a “clear and appropriate remit”, which would ask: “How can the City of Melbourne and the community deliver more affordable housing effectively?”

Endorsed by councillors at the September 5 Future Melbourne Committee meeting, the panel will meet for the first time in late October before a final report is produced in December.

Deputy Lord Mayor Nicholas Reece said the move, to tackle the “diabolically tricky issue of affordable housing and how government responds to it”, was an Australian-first.

“Around Australia we’ve seen citizens juries and people’s panels held on a variety of tricky issues such as drug reform policy and infrastructure policy. But we’ve never had a people’s panel held in this country on affordable housing,” he said at the meeting.

The council has assembled people’s panels before; in 2014 to help develop a 10-year financial plan for the city, and in 2018 to look at the Queen Victoria Market redevelopment.

A report by council officers argued urgent action was required.

“The current shortage of affordable housing is not the result of a single decision, rather the consequence of long-term underinvestment in the development and maintenance of affordable and social housing,” the report stated.

“Responding to this housing crisis... requires innovative solutions and collective action and support from all levels of society.”

The City of Melbourne defines affordable housing as “high quality rental properties for very low-, low- or moderate-income households, that cost no more than 30 per cent of the household’s gross income”.

In 2019 it estimated there was a shortfall of 6000 affordable homes across the municipality, however that figure was set to grow to 23,200 by 2036.

An engagement plan for the upcoming panel noted that NIMBYism (not in my backyard) at times held back affordable housing policy.

“There is strong support at all levels of government to partner with developers and the community housing sector to deliver solutions for our community... the community agrees as well, with broad support for affordable housing projects within the city.”

“However, this support reduces when communities consider affordable housing options in their own neighbourhoods.”

Cr Reece said people’s panels were important tools in working through and helping people understand incompatible views.

“People’s panels are really good at helping working through challenging trade-offs in a particular area of policy making in a society. If you think about the affordable housing debate, you see that there are these trade-offs everywhere. For example, people want their own home to go up in value as much as possible. But they want the [future] houses of their children to fall to an affordable price. Those two things aren’t necessarily consistent so how do you work through that trade-off?”

Cr Olivia Ball said it was time to cast a wider net of viewpoints.

“Deliberative democracy processes are often used and most useful for wicked problems such as this. We want the peoples’ input, we want to think more broadly and more laterally on this very important question. The time and resources we will put into this is a reflection of the priority for this council.”

As a local government the City of Melbourne do not play a major role in housing policy, however part of the panel’s role includes providing recommendations for what they should be advocating for to the state and federal governments.

The decision to create the panel is being seen as a win by advocates of deliberative democracy, a school of thought that claims political decisions should be the product of fair and reasonable discussion and debate among citizens.

One proponent, Dr Stan Capp – president of CBD residents’ group EastEnders – has for several years argued the City of Melbourne needed to better engage the community in decision-making.

Dr Capp (no relation to Lord Mayor Sally Capp), a former CEO of Southern Health, completed a doctoral thesis in 2001 on public healthcare in which a key focus was on community engagement.

He has previously been critical of a council-established people’s panel for the Queen Victoria Market (QVM), which involved non-impartial parties such as traders, which he argued was “poorly structured and had predictably disappointing outcomes”.

However, he was “extremely positive” about the Affordable Housing People’s Panel and congratulated those involved in establishing it.

“The paper being presented sets out the issues well and correctly identifies the importance of the question and remit, the need for independent randomly selected panellists and a commitment by the council to include recommendations to the maximum extent possible in future decision making,” he told *CBD News*.

As part of the panel process, the council also committed to identifying where it can’t incorporate a recommendation by the 40-strong group and “clearly explain why”.

Dr Capp said this was “good practice”.

He added: “[The panel] will demonstrate a ‘proof of concept’ of an approach that the City of Melbourne should embed in its decision making on matters of significant complexity.”

“The use of this strategy in dealing with the complex issue of affordable housing is an excellent opportunity to utilise this model of deliberative democracy and a well-designed evaluation tool should be adopted to make sure that any learnings are identified and will inform future panels.” ●



*David Schout*  
JOURNALIST  
DAVID@HYPERLOCALNEWS.COM.AU

# Housing crisis prompts council action on short-stays

*The City of Melbourne is the latest Victorian local council looking at doing what it can to mitigate the growing number of short-stay apartments in its municipality in a bid to open the market to more long-term renters in the city.*

WORDS BY *Sean Car*  
COUNCIL AFFAIRS

At their August 29 meeting, councillors voted in favour of introducing an annual registration fee of \$350 per property and a 180-day cap on the number of days a property can be leased for short-stay accommodation per year.

The policy position adopted by the council recognised a “need to track and regulate the short-term rental accommodation industry to relieve a tight housing rental market by increasing the availability of housing being used for longer-term homes for people”.

Council management will now begin a consultation process with the community and stakeholders to inform the draft local law with a report to come back to councillors in November.

The City of Melbourne is home to one of the biggest short-term rental markets in Australia, with council data showing around 4100 active short-term rental listings, which represents around 14 per cent of the city’s residential properties.

The overwhelming majority of these properties (84 per cent) are located in the CBD, Docklands, Southbank and Carlton.

However, Inside Airbnb lists much higher figures than the council’s data, currently showing there to be more than 6700 active properties on the short-stay market in the municipality.

With the motion endorsed by councillors on August 29, the council says it will consult extensively with the community and key stakeholders, including short-term rental owners and operators, on any new policy options for the sector. Any new regulation would not be introduced until February 2024.

Lord Mayor Sally Capp said the options under consideration represented an “important step to address the housing crisis and increase the number of homes available to our residents, students and key workers”.

“We are in a housing crisis,” Cr Capp said. “Every home that becomes available matters. That’s why we’re looking to encourage property owners to move into the long-term rental market.”

“As Australia’s fastest growing city, we are considering all options that will deliver more housing – and the quickest way to do that is to utilise housing that is already in place.”

“Based on benchmarking from other capital cities and municipalities, an annual registration fee for short-term rental properties may be set at \$350, and a short-term rental cap may be set at 180 days.”

If successful, the City of Melbourne would join the Bass Coast and Warnambool Shires, as well as Frankston and Mornington Peninsula Councils to introduce such measures as an annual registration fee.

Other metropolitan councils including City of Port Phillip and City of Yarra are also currently investigating options to deal with short-stays.

Deputy Lord Mayor and the council’s planning portfolio chair Cr Nicholas Reece said compared with other Australian cities, the proposed changes represented a “light touch approach” and that there was “ample capacity” in the city’s hotels.

“I will also just highlight the fact of there being more than 10,000 new hotel rooms that have come online in the last few years. We’ve got 1200 under construction and so there is ample capacity in our hotel industry for welcoming

thousands and thousands of new tourists,” he said.

“So, it’s not the beginning of the journey, but it’s an important next step.”

President of local residents’ group East Enders Dr Stan Capp, who is also a committee member of Residents 3000, told *CBD News* he supported the council’s goal of freeing up more accommodation and deterring short-stay operators from disrupting residents’ amenity.

“In pursuit of this goal, increased regulation, and a code of conduct on owners of short-stay accommodation seems totally appropriate,” Dr Capp said.

“In this process, recognising the variable effects of short-stay accommodation on longer term residents in apartment towers is also relevant. The disruptive effects both potential and real on residents who care deeply about the maintenance and ambience of their buildings cannot be ignored.”

“Accountability for any additional maintenance or costs that are incurred by owners’ corporations as a result of inappropriate behaviour by short term guests also seems reasonable.”

“Similarly, there needs to be tangible consequences for anti-social behaviour that is observed and reported. These should be part of any code of conduct.”

Senior director government and corporate affairs at accommodation platform Stayz Eacham Curry said the move by the council would “only limit accommodation options for tourists and income for mum and dad retirees”.

“Introducing new fees or restrictions on the number of nights short-term rentals can operate will not introduce more homes to the long-term rental market in Melbourne,” he said.

“Stayz supports fit-for-purpose regulation of the short-term rental sector. We have consistently advocated for a state-wide registration process, a mandatory code of conduct, and an industry-funded industry body to adjudicate community issues. We urge the Victorian Government to introduce sensible regulation without sacrificing tourism or leaving these issues up to councils like City of Melbourne to solve on their own.”

The state government is currently considering a tourism levy on short-stay accommodation, with recent reports suggesting a rate as high as 7.5 per cent is on the table, which is expected to generate at least \$40 million in annual revenue for the state.

But the Victorian Tourism Industry Council (VTIC) and some local business groups have argued the proposal would be a major impediment to the sector’s post-pandemic recovery, while doing little to solve the housing crisis.

Eacham Curry said a consumer-facing levy as high as 7.5 per cent was “ill-conceived” and didn’t represent “the best or most equitable way” to address concerns around the impacts of short-stays.

Speaking at the council meeting on August 29, Cr Rohan Leppert said while the government’s proposed “tourism tax” was “shorthand” for generating revenue from the short-stay accommodation, he hoped the council’s initiative could help “unlock some doors at Spring St”.

“Other cities around the world don’t have that dearth of regulation, and they know the difference between a short-stay and a long-stay apartment,” Cr Leppert said.

“Wouldn’t it be a good thing if after we signal our own intention to enter this space, that the council and the state can partner on how we can ensure that as government generally enters regulating this space, it does so in a way that both levels of government are completely aware of, and are complementing the work that each other is doing?”

“I also hope that we can unlock some doors at Spring St and figure out how regulating this space across two levels of government works efficiently, not just in the interests of government, but above all, in the interest of the public.” ●

**For more information:**  
[participate.melbourne.vic.gov.au](http://participate.melbourne.vic.gov.au)





## Melbourne Fringe takes centre stage

WORDS BY *Edmund Coleman*  
ARTS & CULTURE

“PLAY UP!” is the rallying cheer for this year’s Melbourne Fringe Festival.

Welcoming all Victorians and drawing performers and crowds from across the world, the Melbourne Fringe Festival is back.

Fringe festivals are a complex and diverse spectacle of the arts, tracked and followed around the globe. With the unifying desire to “reimagine Melbourne into one epic art adventure playground,” Melbourne Fringe creative director and CEO Simon Abrahams describes this year’s festival as an opportunity for show-goers to open themselves up to new experiences.

“Melbourne Fringe is quite unique, actually,” Simon Abrahams told *CBD News*. “Globally, in the world of Fringe festivals, we’re not a giant. We are a place for incredible art making.”

Featuring a formidable and well-woven tapestry of 475 events, this year’s program ranges from a Scandinavian WWE-style circus smack down at Queen Victoria Market (*Mythos: Ragnarok*), to *An Evening with JK*, where trans comedian Anna Piper Scott plays a cipher of the *Harry Potter* author.

A colossal eight-metre-tall bright-gold and fully accessible playground swing will be installed at the State Library free for all to ride.

The festival will host 44 award-winning shows from Australia and overseas, however true to Fringe culture, the heart of the festival lies in the margins of society and amplifies the voices of emerging artists.

“I think what makes Melbourne Fringe unique is [that] we’ve got artists at the absolute top of their game, making extraordinary work alongside fresh artists trying new things, all on the one bill together,” Simon Abrahams said.

The festival, of which more than 80 per cent of events are homegrown in Victoria and made up of 55 per cent LGBTQIA+ artists, speaks to diversity and the vibrancy of being different.

Melbourne Fringe runs throughout October and multiple locations in the city. ●

**For more information:**  
[melbournefringe.com.au](http://melbournefringe.com.au)

## QVM Trader Profile



## A new chapter unfolds for Mary Martin Bookshop at QVM

*After quitting her job as a professor of medical research, Jaye Chin-Dusting “couldn’t resist” taking over the former City of Melbourne Visitor Hub at Queen Victoria Market (QVM) to expand the Mary Martin Bookshop.*

WORDS BY *Georgie Atkins*

One of Australia’s first female booksellers, Mary Martin opened her first store in Adelaide in 1945. After discovering a love for Indian culture and eventually moving overseas, the “fairly unusual woman” passed on the space to literary figure Max Harris, before Ms Chin-Dusting took over in 2016.

“She was ahead of her time,” Ms Chin-Dusting said. “She never got married, she loved books, opened book shops, and then went over to India and lived in an ashram.”

Mary Martin’s love of all things literature is a legacy that Ms Chin-Dusting has not only stayed true to, but wholeheartedly embraced in her expansion of the business.

“I’ve got three book shops, but just between you and me, the QVM shop is my favourite”, Ms Chin-Dusting told *CBD News*.

Ms Chin-Dusting’s stores in Southbank, Port Melbourne and most recently at QVM, offer a diverse range of books and gifts across the stores, catering to every kind of shopper.

“You’ll find that 70 per cent of the stock overlaps between the three shops, but the other 30

per cent are quite targeted to the locality of the shops,” she said.

“We also have a very large inventory targeted towards the impulse buyer; those who are just browsing and then spot something that they never knew they wanted, but suddenly realise they’ve always wanted it.”

Ms Chin-Dusting describes the community of traders at QVM as “wonderful” neighbours to her unique space.

“The friendships I’ve made here have ranged from quite tight, professional connections, right to true friendships I think.”

“I’ve made some really good friends here, which is why I am personally almost always here.”

But Mary Martin Bookshop has more to offer shoppers than just retail, with bookings now open for their latest children’s story time event themed to a teddy bears’ picnic.

“We’ll have it on the verandah, out in the sun with cushions, and the author will read their story to the kids,” she said. “I think it’s a very happy place for children here.”

For older booklovers, the store is also offering adult mystery nights where participants will find a drink and a mystery book waiting for them at a secret location, ready to enjoy among a group of like-minded readers.

Mary Martin Bookshop is far from any ordinary book shop, with books and service personalised to each shopper to create a truly novel experience.

“Because it’s an independent book shop, the staff and I are very much book-lovers,” Ms Chin-Dusting said. “I think you’ll find that a lot of us know the books really well, and we love talking to people about books.”

QVM’s Mary Martin Bookshop is located along String Bean Alley and is open Thursday to Sunday from 9am.

[marymartinbooks.com.au](http://marymartinbooks.com.au) ●

## Builder awarded top honour for Palace Theatre redevelopment

WORDS BY *Brendan Rees*  
BUILDING

The builders behind the 16-storey Le Meridien five-star Marriott Hotel have been named the Master Builder of the Year after the controversial redevelopment of the 110-year-old Palace Theatre.

L. U. Simon Builders completed the \$100 million Bourke St project in October last year before the hotel opened in March, featuring 235 rooms, including executive suites across 12 floors, as well as a restaurant, bar, and café.

It also has function rooms, a gym and rooftop pool with sweeping views across Parliament House and the MCG.

At the time, the project was so large and challenging that some of the largest builders reportedly turned their back on any redevelopment.

But L. U. Simon senior project manager Dennis L. Moschoyiannis said the company had “developed a build methodology that satisfied the Melbourne City Council sufficiently to let us demolish the former Palace Theatre”.

“It helped that we had 60 years of local knowledge to convince stakeholders that the job could be built and that it would be built with minimal disruption to the adjacent Princes Theatre and public transport network,” he said.

“To dig 12 metres underground required specific rigs, equipment and even a mining conveyor-belt to remove more than 5000 trucks worth of material through the CBD, this was trammelled by a landlocked building, a heritage façade, public protection orders, neighbouring outdoor dining, one way traffic and busy tram network, not to mention over 120 protests at nearby Parliament House as well as impromptu city closures during construction.”

Mr Moschoyiannis also acknowledged their design consultants, Peddle Thorp, JBA, Northrop and Marriott Design.

“This job would not have been a success without a devoted team providing not only professional but also practical services from start to finish.”

L. U. Simon Builders was awarded the honour at the Master Builders Victoria’s 2023 Excellence in Construction Awards held in September, the third time the firm has taken out the title.

The ceremony noted the company’s “meticulous work reimagining the former site of the historic Palace Theatre”.

The project team also won the Australian Institute of Building’s National Building Professional of the Year award and was similarly honoured, by the Victorian chapter – also for the third time.

L. U. Simon Builders began the project’s construction in November 2020, between Melbourne’s second and third lockdown.

The redevelopment prompted an outcry from the community after the Palace Theatre was demolished, which also sparked debate about the city’s gradual loss of heritage buildings. ●

Proudly representing the community in Melbourne’s CBD



**Evan MULHOLLAND MP**  
MEMBER FOR NORTHERN METROPOLITAN REGION

Unit 10, 2 Graystone Court Epping Vic 3076  
03 9651 8242 | [evan.mulholland@parliament.vic.gov.au](mailto:evan.mulholland@parliament.vic.gov.au)  
[EvanMulholland.com.au](http://EvanMulholland.com.au) | [EvanMulhollandMP](https://www.facebook.com/EvanMulhollandMP)  
[@evmulholland](https://twitter.com/evmulholland)



Authorised by Evan Mulholland MP Member for Northern Metropolitan Region, Unit 10, 2 Graystone Court Epping Vic 3076, Funded from Parliamentary Budget.

## LAW

## DIY wills and their hidden risks

*With the overall cost of living on the rise, it is understandable that many people will opt for the cheaper option of a DIY will kit, which can be purchased at your local post office.*

WORDS BY *Peter Neville*  
NEVILLE.COM.AU

However, while well intentioned, DIY wills may be more risky and more costly than you think.

Here are some common risks associated with preparing a DIY will:

### Confusion during probate

When you pass away, the first job for your executor is to apply for probate, which will allow them to access and distribute your assets as you intended. Probate requires the Supreme Court to prove that the will meets formal legal requirements, including confirming that it was signed and witnessed correctly to show that the correct person created and signed the document.

Unfortunately, it is common for DIY wills to fail to fulfil the requirements of a legally binding will, meaning the court must determine the will's validity and how it is to be interpreted. In the case of an invalid or unclear will, it may mean that your wishes are not adhered to, and your executor will be faced with the additional time and financial costs of proving your intentions.

### Undue influence

Allegations involving a deceitful relative or a person in a position of trust pressuring you into making a will, or not comprehending your genuine desires, have the potential to create tension in relationships, regardless of the validity of these suspicions.

Moreover, it's essential that the individual creating a will was fully aware of and in agreement with the details within it. This encompasses a clear understanding of how their choices will impact the outcome, thus guaranteeing the alignment of the will with their authentic intentions.

### Confusion about assets

DIY wills may lead to ambiguity regarding the assets that can be addressed through the will itself and those that require supplementary documentation for handling. This includes assets like superannuation, jointly owned properties, and assets held within family trusts.

### Lost or misplaced wills

Will documents created personally are frequently kept within one's residence and are susceptible to being inadvertently lost, misplaced, or intentionally damaged by individuals who object to the provisions or stand to gain from the estate under intestacy regulations.

Creating your will with Nevile & Co. brings the additional benefit of secure document storage in our deed packet facility, so you can rest assured that your Will is safe for when your loved ones need to access it. Additionally, your will is only provided to those who are able to prove their identity and reason for requiring the will, so only relevant people will be granted access.

To create a valid will, contact Nevile & Co.

*Disclaimer: This publication contains comments of a general and introductory nature only and is provided as an information service. It is not intended to be relied upon as, nor is it a substitute for specific professional legal advice. You should always speak to us and obtain legal advice before taking any action relating to matters raised in this publication. ●*

## STATE MP (UPPER HOUSE)

## A better balance on heritage

“

*Recently, the City of Melbourne has been working with consultants to conduct a review of heritage protection in North Melbourne. The Planning Panel's report raises questions over where our priorities should lie.*

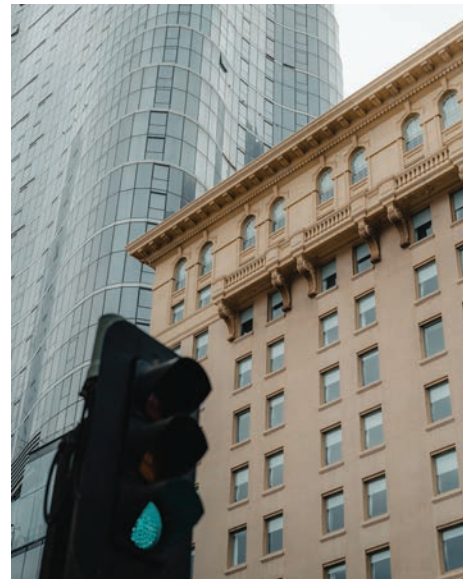
”

WORDS BY *Evan Mulholland*  
LIBERAL MEMBER FOR NORTHERN METROPOLITAN

When heritage reviews are handed over to paid heritage consultants, one suspects that to them nearly every building starts to look like it has heritage value. As the saying goes: "If all you have is a hammer, every problem looks like a nail".

This attitude is embodied in the Panel's report, with the expansion of existing overlays and the inclusion of places that many would find questionable – with equally questionable justifications.

One of the Panel's desires is to protect the Flemington Bridge Railway Station. This is despite none of the original complex remaining. It also makes it clear that concerns over accessibility, for example, bear no weight in the consideration of the station's heritage significance.



According to the Panel, the Flemington Bridge Railway Station is significant to the City of Melbourne because it "reflects concerted efforts and agitation by residents of the area in 1883-84 to have a railway station constructed after the [Coburg] line originally opened without a station at Flemington Bridge". The report also refers to later agitation for improved station facilities.

The irony is that heritage protecting this railway station would stifle the ability of our community to agitate for improved facilities. The community should be able to adapt the station to our needs, including improved usability, amenity, safety, accessibility and the like.

As YIMBY Melbourne has pointed out, public infrastructure ought to serve the public.

Another addition is a mundane 1970s brutalist office building in North Melbourne, formerly the Wes Lofts and Co office. If it weren't

passed by unnoticed, many may find its aesthetics questionable at best. We should live with it forever, presumably.

And yet more irony comes in the form of Hotham Gardens, an unremarkable block of brick flats. Its significance comes from it being an example of urban renewable through affordable own-your-own flats, apparently. It's a shame that developing this land into a greater number of modern, affordable apartments will be made even more difficult – in the middle of a housing affordability crisis.

Our heritage stems from our history. It reflects the needs of our city and the community at the time these precincts and places were designed and developed. It tells their story.

We should fully support protecting examples of places that have outstanding heritage merit. However, in protecting our heritage, we cannot forget the purpose for which places exist in the first place – to serve a particular purpose to their owners, inhabitants, and the public.

To an extent there is an element of heritage in each place. There will be stories in relation to how it came about, who designed it, lived in it, how it featured in the cityscape and the like.

But we cannot find ourselves in a situation where paid heritage consultants endlessly justify ever-expanding protection. It diminishes the heritage protection of places with more significant heritage and limits the ability of our community to tell our story.

There are better ways of protecting our history and memories than denying our community the choice to tell our stories and to adapt the city to our needs – as did those that came before us.

If Melbourne is to continue to flourish, we must find a better balance between protecting our heritage enabling our city to adapt to our needs.

*Evan Mulholland is the Liberal Member for the Northern Metropolitan Region ●*

## STREET ART

## A sustainable art precinct

*A few months ago, I secured a lease on some land on the edge of the city on King St.*

I figured out I could run a carpark and then use that money to regularly paint up all the buildings surrounding it.

There are amazing walls – it would be perfect for an urban art park, or even festivals. So, once the lease was signed, I began to work on the space.

I got four cubic tonnes of crushed rock, fixed the fences, put in lights, and spent a couple of weeks creating a beautiful art space and carpark.

I planned to use the money from the carpark to pay for boom lifts and paint to paint up the area with all the best artists. It was all very exciting; I even had a carparking app company on board.

Last Friday night, September 8 was its first day open and it looked awesome, and I knew once it was painted it would be a very special space.

But during that night I got a call from the car park company that we partnered with to say that they had received a call from somebody that claimed to be the owner of the land. We had sent the lease and all the documents to the carpark company, so they weren't too concerned – they said that this has happened before and has never really been a problem.

So, we left the carpark open and began to think about the first paint up. However, on Tuesday I got a call from the police stating that the owner was thinking about pressing charges.



It was real; the whole thing was a scam – all the documents, the lease, the lot. I had spent weeks fixing up someone else's land.

I worked it out with the owner, he wasn't going to press charges, but all the hard work had to be reversed and the park closed. I could not believe that someone would come up with such an elaborate scam.

I thought I had worked out the perfect sustainable art park, it would have been funded by the car park and changed regularly, creating a new and important art precinct.

I guess my advice to you is to triple check

everything; I am pretty good with documents etc., but some people are crappy and spend a lot of time and energy trying to make a living off other people's misery. ●



*Adrian Doyle*

ARTIST

DOYLESART@HOTMAIL.COM

# Lively AGM delights CBD residents

*Where do you find people gathering to enjoy an AGM?*

Thursday, August 31 saw Melbourne's Residents 3000 hold their AGM at the Kelvin Club on Melbourne Place – an AGM featuring the Lord Mayor, Sally Capp; singer "Piano Man" Alfredo Malabello, and 76 members and supporters.

The Lord Mayor opened with an update on the state of the city, followed by the formal AGM with appointment of a new 14-strong committee and office bearers. Rafael Camillo who was re-appointed as president gave a detailed and informative recap on activities over the past 12 months.

The formal proceedings were followed with light refreshments, animated discussions among the attendees, and our piano man, Alfredo playing and singing popular songs. It was such a lively affair the people were seen a hoppin' and boppin' about to the music. Alfredo let us know that he and colleagues are shortly to open a piano bar at the top of Bourke St in a month or two. It seems that it will be a popular spot to go!

### What did Sally say?

What follows are the top priority items being focused on at Town Hall:

- **Greenline Project** – aiming to beautify the north bank of the Yarra River. Residents' participation in the landscaping is well advanced.
- **Revitalising the iconic Queen Victoria Market** is progressing well. After COVID, people are returning. Seven million visitors last financial year, up 35 per cent from the same time last year. The Munro precinct is taking on more tenants and the new Food Hall is close to opening.
- The council is continually addressing the **homelessness** problem with support for the 50-studio apartment development "**Make Room**" project at 620 Little Bourke St.
- The **short-stay problem** is being addressed. Can the idea be adequately regulated? Can vacant apartments be effectively utilised when affordable accommodation is in such short supply? Feedback from the community is 50-50 towards this idea.
- The **city economy** is improving. More workers, tourist and locals filling the streets. Traders still report that Mondays and Fridays are a bit light on but all in all, the vibrancy of the city is improving.
- The city is progressing with its **Future Streets** project. This is an ambitious project with a planning horizon to 2050. It is important to have vision and to keep the changing demands of the modern city in mind. Residents are involved in this process through the council's Participate Melbourne website.
- **Safety in the City**. There are still problem areas. Flinders and Elizabeth streets, Queen Victoria Market



– Franklin St continue to be challenging. Safety is a constant struggle for the council – a problem faced by all big cities. Residents can assist by communicating to relevant authorities and being vigilant.

- **Safe Injecting Room**. This is a topic of great concern for residents. The lack of state government decision-making on this matter and the ideas being put forward are concerning. As one resident commented on the night, "Why is this service not part of a hospital complex? Why put the service in the middle of the CBD at all?"

There was a short question time. Topics raised with the Lord Mayor included:

- Injecting Room proposal
- How to force developers to be responsible for removing graffiti from their hoardings.
- Late night libraries need to be reinstated now that students are back in the city.
- Noisy compactors situated in poorly chosen locations need a solution.

### President Rafael's report

The president's report was circulated to all members prior to the meeting, posted on the website and read with further explanations at the meeting. The report records how Residents 3000 continued to "connect, support and inform" members during the year with a variety of topics, programs and presentations from interesting people. Rafael confirmed that the organisation remains committed to advocating issues that matter most to members and supporters with the aim of contributing to residents' wellbeing and quality of life in the CBD.

### Next event – Health and Wellbeing in the CBD

Our Forum 3000 event is on Thursday, October 5 at 6pm at the Kelvin Club, Melbourne Place. Details are posted on our website [resident3000.com.au](http://resident3000.com.au) and reminders will be sent to members and subscribers by email. ●



Sue Saunders  
RESIDENTS3000.COM.AU



## Observing the universe: the Great Melbourne Telescope, 1875

*The open-air reflector telescope at the back of the Great Melbourne Telescope Building faces up to the skies, its seemingly delicately fligreed barrel looking like something from a circus act.*

Any minute now you expect to see a human cannon exploding from the top, heading up into space, ready to meet the universe.

But this was the latest in modern technology, not popular entertainment. The telescope, the creation of Irish optician Thomas Grubb, was built in Dublin and shipped to Melbourne in 1868 where it made its way to the observatory, which was built five years earlier.

It was the largest fully steerable telescope of its time and symbolised a Melbourne that was well on its way to establishing itself as a serious centre of science and learning, just as the museum, library, art gallery, university, zoo, and botanic gardens had done for the previous decade.

Located in the Royal Botanic Gardens, the telescope building housed the steam-engine, a polishing machine for the telescope mirrors, photographic rooms, and other work-rooms that serviced the telescope. Its sliding roof doubled as cover for the telescope.

In the image you see here, the building is still settling into the landscape. In the foreground you can see telegraph wires and the newly established observatory gardens. Behind the building are the Botanic Gardens and the CBD is just visible in the hazy background.

The telescope was used to study the skies until 1944 when the observatory closed, and the telescope made its way to Canberra. There it was modified to meet modern astronomical standards and there it was severely damaged in the bushfires of 2003 that destroyed the Mount Stromlo Observatory.

All was not lost, however. Museums Victoria, the Royal Botanic Gardens and the Astronomical Society of Victoria are at the forefront of a restoration project, and it is to be hoped that the telescope will one day be returned to its former glory in its original location, a reminder of the confidence of a post-gold rush colony intent on being taken seriously.

In the meantime, you can sense the impact of this impressive telescope in this image, one of approximately 50 photographs from the set *Views of Melbourne* by Charles Nettleton in the Royal Historical Society of Victoria's collection. ●



Dr. Cheryl Griffin  
ROYAL HISTORICAL SOCIETY OF VICTORIA

## CONNECT WITH YOUR LOCAL COMMUNITY

The CBD community Hub is a free online space to connect with fellow CBD locals, stay in the know, post requests for help, share skills and local knowledge, ask for recommendations, discover local services, classes, retailers, events and more

### CBD NEWS



If you're a local resident or business you can join up here

WE LIVE HERE

# Cash without the cure



*Victoria's proposed tax on short-stays will generate cash for the state government while ignoring internationally recognised solutions to tackle problems with the industry.*



Major cities and jurisdictions, including London, Paris, Barcelona and even New South Wales, are all trying to regulate the behemoth industry that is having a devastating effect on housing affordability.

This month New York strengthened its laws to rein in the out-of-control short-stay industry. Under the new rules, rentals less than 30 days are only allowed if the operators are registered with the city. Operators must sign a commitment to being physically present throughout the rental, sharing the home with their guests. Plus, there is a limit of two guests per booking.

Valuable lessons from cities like New York are being disregarded in Victoria, and Melbourne will continue to suffer.

The proposed Victorian tax on short-term rentals will be factored into the accommodation price and the guests will pick up the tab.

Short-stay operators already enjoy the loophole that allows the entire industry to avoid paying virtually any GST, and this new state tax only partly impacts that advantage.

If this tax is the only regulatory policy to be implemented at the state level, short-stay issues will continue unabated. The tax appears to legitimise the industry while leaving it unregulated. The government has missed the opportunity to gather intelligence on operators because the tax will be collected from the platforms like Airbnb, while operators will remain uncounted and unknown, carrying on regardless.

The only beneficiaries of the new tax will be Airbnb and other short-stay platforms; because the policy gives the impression that something is being done. Together, state government and the major short-stay platforms now have a policy outcome that will continue to ensure that Victoria is one of the most heavily saturated short-stay markets in the world.

Where did the short-stay tax idea originate? We know rising interest rates have been eroding the state's stamp duty bonanza, and the Commonwealth Games cancellation costs will be excruciating. Perhaps the state government just needed what the largest platform claims to offer hosts: "an extra bit of income" on the side?

We Live Here has just started liaising again with the government after a two-year hiatus. It is indeed disappointing that the issues we have been raising seem to have been discounted.

### Eight years and we're still waiting

After eight years of inaction the Victorian Government has announced a policy that will only generate income for the state coffers, without solving systemic short-stay problems.

What else has the government done since 2015? It made one dismal attempt to look like



it was taking action on short-stay parties, with a Bill that has had zero effect and, the last time we checked, zero tribunal orders in favour of residents.

- Our policy is waiting to be heard and acted upon:
- A state-wide registration system for short-stay operators.
- Allow owners' corporations to make rules on short-stays.
- An annual day cap.
- Realistic and enforceable penalties.

All these basic requirements are being brushed aside while the government merely imposes a tax that might help balance its books.

### Campaign donations

As a not-for-profit organisation, donations from individuals and buildings keep our campaigns going. To register as a supporter of We Live Here or to donate, please visit [welfare.net](http://welfare.net).



Barbara Francis & Rus Littleton

CAMPAIGN@WELIVEHERE.NET



Open 24/7  
genuine kinky escorts  
5 mins to your door  
CBD location

*Top Class of Collins Street*  
**(03) 9654 6351**  
contact@topclassofcollinsstreet.com.au

**THE MOST EXCLUSIVE ESCORT AGENCY**

*Paramour*  
OF COLLINS STREET

CITY CENTRE  
Melbourne's exclusive entertainment service.  
Highly recommended for our interstate and overseas visitors

- Dinner Companions
- Social Escorts
- Sensual Ladies

VIP

**Paramour's GRAND RE-OPENING**  
Be with the best girls in Melbourne give us a call to pre-organise for opening day due to overwhelming demand

**CITY CENTRE GIRLS**

**9654 6011**  
CBD - 5 MINUTES TO YOUR DOOR  
たくさんの美しい女性  
日本語を話します  
rsvp@paramour.com.au





## 女王市场公园 征求社区意见

墨尔本市政拟建一个占地1.8公顷的维多利亚女王市场公园，这将是CBD同类中最大的公园，为此正式启动了社区咨询活动，

Brendan Rees

作为市议会和全球房地产开发商Lendlease斥资17亿澳元对女王市场南端进行再开发的一部分，该计划将毗邻Franklin街、Queen街和Peel街的现有露天停车场改造成一个公共广场。

市政称，这个公共空间将称为“人民公园”，是一个“受欢迎的绿色空间，供人们品味市场体验”，同时也是一个“与家人和朋友一起放松，享受各种活动，激活这个历史性市场”的地方。

为了确保这个公园能满足当地市民的需求和愿望，市议会正在就这个广场公园的11项设计原则征求社区的反馈，这也将响应市场广场宪章并体现广泛的社区参与。

这个宪章是作为管理公共场所的一种工具而制定的，以确保实现和保护空间的预期愿景。

公园的拟议特征包括宽阔的草坪、改善城市生物多样性的本地植物、大树可供遮荫、广场举办活动的和游戏空间。

另外还计划与Wurundjeri Woi Wurrung原住民文化遗产公司和墨尔本原住民合作开发一个“向原住民致敬花园”。

另一个特点是在上面铺路、绿化种植以及“穿越公园的方式，对原来墓地以表示尊重”。

社区还将有机会对拟建的Queen's Corner大楼提供反馈，该大楼将为商铺和社区提供便利设施，并为激活市场和创意体验提供空间。

咨询活动现已开始，截止日期为10月8日星期日。市政将举办一系列活动，包括弹出式会议和利益相关方研讨会。

## 绝妙的搭配

要想找到Pearl Chablis & Oyster 酒吧餐厅并不是件容易的事，你必须要做更多的信息搜索。

Jack Hayes

穿越热闹的中央商务区中心，乘自动扶梯到达繁忙的购物中心二楼，才能找到这家酒吧餐厅，走进门就能看到世界上最奇妙的饮酒搭配，既夏布利酒(Chablis)和生蚝。

在葡萄酒的世界里，夏布利酒凌驾于所有其它葡萄酒之上，始终是葡萄栽培中的佼佼者。

夏布利酒来自法国中东部Burgundy最北部的产区，被认为是白葡萄酒中的经典，由具有复杂历史的chardonnay葡萄酿造。

这家著名的酒吧餐厅自2022年初开业以来，倾心于对葡萄酒中“高贵”葡萄的热爱，刚刚完成了一次彻底的更新改造，展现了“新团队、新菜单、新体验和新理念”。

在行政总厨Claude Gorjux、主厨Hunter Tacuyan和Max Doucet以及客座侍酒师Luke Campbell的带领下，该酒吧餐厅打破了传统客人体验的障碍，打造了一个每张桌子都有厨师在场、每道菜都由厨师亲自上菜的特色。



Gorjux说：“我们的酒吧餐厅体现了温馨而华丽，目前的菜单和体验是一种完美的搭配。”

“作为一名厨师，我很高兴能与每一位顾客保持密切联系。食客们将亲眼目睹厨房里发生的一切，这将是兴奋和紧张的组合，但这都是乐趣的一部分。”

新菜单融合了现代澳大利亚食材和法国厨艺，夏布利酒和生蚝自然成为主角。

酒吧餐厅的招牌菜名为The Pearl，由烟熏Paspaley珍珠肉、岩石生蚝、老藤夏布利葡萄酒、花椰菜和白黄油组成。

欲了解更多信息，请访问：pearloyster.co

## 市区地下电力设施维修

为了确保本市一些最繁忙地区的高电量使用，墨尔本市区的几个地下电力设施维修工作已经开始。

电力公司CitiPower在大范围的年度检查计划后，将从10月到2024年初，对本市五个独立的地下电力设施进行维修。这些设施主要是为中央商务区提供电力保障。

CitiPower主要项目和维修负责人Marcus Olive表示，这项维修工作对于确保地下电力设施的安全性和可靠性至关重要。

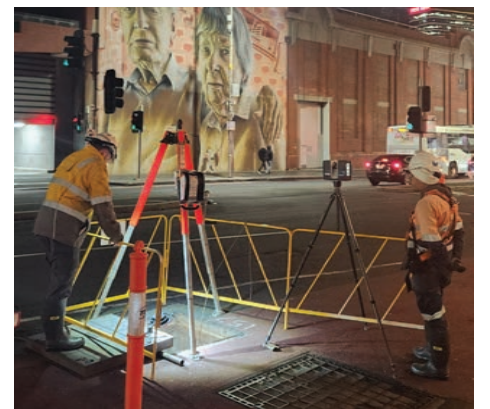
Olive先生说：“从表面上这些设施看起来很小，但每个盖子下面都有一大片区域，包含一系列为这个城市供电的电缆和其它电力基础设施。”

“每个地下电力设施的维修需要大约48小时来完成，我们将与商家和市民密切合作，尽可能减少对他们的影响。”

CitiPower将在周末进行施工，主要是在白天，一旦完工，将恢复人行道和交通道路的正常通行。在某些地区，夜间可能需要少量的工作。

Olive先生表示：“由于地下电力设施位置的原因，以及为了让维修人员安全完成工作，街道交通、停车位和公共交通可能会出现一些小的中断，但不会影响电力供应。”

“我们感谢墨尔本市民在我们开展这项重要工作时的耐心，我们保证采取积极措施，尽可能减少对市民和商家的影响。”



受影响的车道封闭区域：

- Flinders 巷 - 10月期间位于Russell街和Elizabeth街之间。

- Little Collins街 - 10月和11月初期间位于Russell街和Elizabeth街之间。

交通管理器和标牌将到位，以确保汽车驾驶员、行人和骑自行车者的安全。

有关该计划的更多信息，请访问：



## 炫目灯光 美妙音乐

市中心将开展一项新活动，让人们可以尽情享受迪斯科灯光音乐。

Brendan Rees

在Meyers Place令人眼花缭乱的步行穿越体验名为“闪光巷”，其特色是由数千个小镜子方块组成的充满活力的壁画，当它以波浪形式移动并折射光线时，营造出真实的迪斯科球穿越效果。

墙壁上有一幅由Mike Makatron创作的令人惊叹的Jungle Funk壁画和一个由Steve Manos设计的名为“灯光集市”的灯光装置，这两个装置都将在晚上展出，创造出一种前所未有的迷人闪光效果。

Meyers Place酒吧、Lane's Edge酒吧和San Telmo酒吧将提供具有“闪光感”的特制鸡尾酒。Lane's Edge的“Shimmer Elixir”鸡尾酒是用伏特加、蔓越莓、酸橙和可食用

闪光剂制成的，“赋予闪光巷特殊的触感”。

街头艺人也将每周五晚上6点到8点在Loop Bar、2207、Debbie G、Little Notes和CYNTA酒吧处外面表演。

闪光巷活动将持续到11月30日，由墨尔本市政出资，是本市“从黄昏到黎明”活动的一部分，旨在让人们下班后留在市区，或在一天工作结束后再吸引他们回来，刺激墨尔本市区的夜间经济。

9月7日，市长Sally Capp正式启动了这个装置，她说这“给了墨尔本人更多的理由在这个城市的周五晚上歌舞狂欢”。

她说：“墨尔本市的夜间经济将继续繁荣。”

“7月份，夜间消费为2.87亿澳元，比2019年7月增长了15%。7月份的夜间行人活动比6月份增加了7%，因此我们预计，随着进入更温暖的月份，更会加强这一势头。”

这个活动装置由Vee agency制作，并由Uniquely Melbourne引进。

# What's on: October 2023



FRIDAY, NOVEMBER 10, 7PM  
**THE BOITE - QUEEN OF HEARTS**  
 All women. All original. Violins, big bass, trumpets and more. Queen of Hearts Mariachi is an all-female band drawing from the Mexican Mariachi tradition.  
 Primrose Potter Salon, Melbourne  
 Recital Centre - melbournerecital.com.au

UNTIL OCTOBER 1  
**QV MELBOURNE CELEBRATES TURNING 20**  
 There's fun and games, giveaways, birthday exclusives, and more.  
 Cnr Swanston St & Lonsdale St  
 www.qv.com.au/shop/birthday-exclusives



SATURDAY OCTOBER 21, 7PM  
**CHARLES MAIMAROSIA**  
 Witness tradition and innovation come together through the evocative music of Solomon Islands singer Charles Maimarosia.  
 Primrose Potter Salon, Melbourne  
 Recital Centre - melbournerecital.com.au



WEDNESDAY, OCTOBER 18 6PM  
**Brenda Gifford & Ensemble Offspring - Wadhu/Skin**  
 Witness the world premiere of Wadhu/Skin, Brenda Gifford's award-winning 2023 Merlyn Myer Music Commission.  
 Primrose Potter Salon, Melbourne  
 Recital Centre - melbournerecital.com.au



THURSDAY, OCTOBER 19, 7PM  
**YO CiTY Brotha Asanti & Soulectric - I Was Born this Way**  
 Vibrant African percussion and the infectious underground rhythms of New York and Chicago House come together in a night of celebration.  
 Primrose Potter Salon, Melbourne  
 Recital Centre - melbournerecital.com.au

LAST SATURDAY OF EVERY MONTH, 9AM - 4PM  
**CRFT\*WRK CRAFT FAIR**  
 A unique craft fair showcasing independent makers. Featuring everything from art to ceramics, jewellery, embroidery, ethical textiles, homewares, artisan perfume, dog accessories, and much more.  
 Queen Victoria Market, Shed C-D



THURSDAY, SEPTEMBER 28, 7PM  
**JG THIRWELL - SILVER MANTIS**  
 Step into uncharted sonic territory as Melbourne-born, New York-based artist JG Thirlwell's critically acclaimed, Silver Mantis, takes audiences on an electro-acoustic journey.  
 Primrose Potter Salon, Melbourne  
 Recital Centre - melbournerecital.com.au



TUESDAY, OCTOBER 17, 6PM  
**NAT BARTSCH - HOPE RENEWED**  
 Experience Nat Bartsch's full spectrum of musicality with her critically acclaimed album, Hope Renewed.  
 Primrose Potter Salon, Melbourne  
 Recital Centre - melbournerecital.com.au

## Business Directory

### Accounting

Maximising your profits by minimising your tax  
 PH 9603 0066  
 www.rubiixbusinessaccountants.com.au

### Hospitality

JAPANESE RESTAURANT | ROOFTOP BAR | KARAOKE  
 TAKE LIFT TO LEVEL 3  
 MID CITY CENTRE, 200 BOURKE STREET, MELBOURNE  
 WWW.WAKUDA.COM.AU / 03 9663 7756  
 STUDENT DEALS EVERY WEDNESDAY  
 LIVE MUSIC ON THURSDAYS

STATE MP FOR MELBOURNE  
 (03) 9328 4637 office@ellensandell.com  
 146 Peel Street North Melbourne VIC 3051

### Shopping

For the best fresh produce, gourmet food and specialty shopping, you can't beat Queen Vic Market.  
 Open Tuesday, Thursday, Friday Saturday & Sunday with plenty of affordable parking.  
 QVM.COM.AU

### Arts and Culture

MELBOURNE RECITAL CENTRE

### Lawyers

WWW.NEVILE.COM.AU

### Real Estate

Contact our team  
 Gina Donazzan 0412 430 326  
 Kim Davey 0418 924 324  
 Suzie Inglis 0416 671 572  
 Will Caldwell 0419 010 270  
 Melbourne's Finest donazzanboutiqueproperty.com.au

35 Collins St, Melbourne collinsplace.com.au

### Gifts

Clementine's, for your locally made gifts, homewares, accessories and fine food  
 7 DeGraeves St, Melbourne | 9639 2681 | info@clementines.com.au

### Politician

Unit 10, 2 Graystone Court Epping VIC 3076  
 (03) 9651 8242  
 Evan.Mulholland@parliament.vic.gov.au

Ray White Southbank | Port Phillip  
 111 Clarendon Street, Southbank 3006  
 P: (03) 8102 0200  
 www.raywhitesouthbank.com.au

Want to place an ad? Talk to Jack Hayes  
 T 0401 031 236  
 E jack@hyperlocalnews.com.au  
 about how to customise your campaign to our audience every month.



103/8 Bligh Pl,  
MELBOURNE  
**LEASED**  
\$820pw



301/350 La Trobe St,  
MELBOURNE  
**LEASED**  
off market  
\$1,250pw



35 Spring St,  
MELBOURNE  
**LEASED**  
\$1,100pw



Lvl3/368 St Kilda Rd,  
MELBOURNE  
**LEASED**  
\$1,800pw

# BESPOKE LEASING & MANAGEMENT

With our boutique service and specialised approach to looking after your most important asset, we are your trusted Property Management team.

Contact us today for a confidential discussion on your investment.

“For 2 and a half years I have been a tenant at a property managed by Suzie. She has been a dream. Communication of the highest level. Fast replies to all inquiries. Nothing is ever unanswered. Easily reached and is willing to listen and help where she can. I know I have been so lucky to have her, especially over covid times and I am saddened that I am no longer under her management. But so very grateful for all of the work she has done. Your property will be safe and looked after in her hands.”

Bj - Tenant

Scan to see what  
Vendors and Rental  
Providers are saying.



**Kim Davey**  
0418 924 324

**Suzie Inglis**  
0416 671 572